

Nucleolin Rabbit mAb

Catalog No: #60136

Package Size: #60136-1 50ul #60136-2 100ul

Orders: order@signalwayantibody.com

Support: tech@signalwayantibody.com

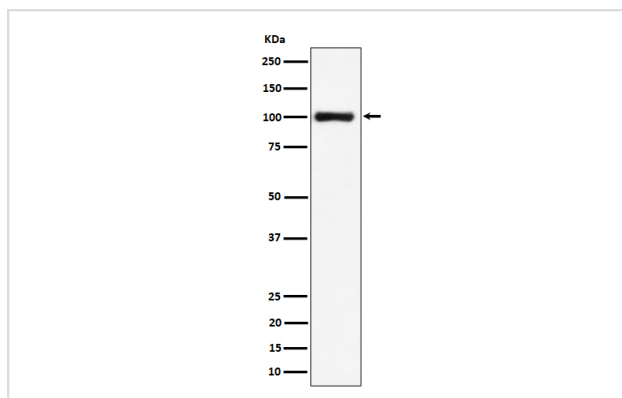
Description

Product Name	Nucleolin Rabbit mAb
Host Species	Rabbit
Clonality	Monoclonal
Isotype	Rabbit IgG
Purification	Affinity-chromatography
Applications	WB
Species Reactivity	Human
Specificity	Nucleolin Antibody detects endogenous levels of total Nucleolin
Immunogen Description	A synthesized peptide derived from human Nucleolin
Other Names	NCL; Nucl; Nucleolin;
Accession No.	Uniprot:P19338
Uniprot	P19338
Formulation	Rabbit IgG in phosphate buffered saline , pH 7.4, 150mM NaCl, 0.02% sodium azide and 50% glycerol.
Storage	Store at +4°C short term. Store at -20°C long term. Avoid freeze / thaw cycle.

Application Details

WB 1:500~1:2000

Images



Western blot analysis of Nucleolin expression in HeLa cell lysate.

Product Description

Nucleolin is the major nucleolar protein of growing eukaryotic cells. It is found associated with intranucleolar chromatin and pre-ribosomal particles.

Background

Nucleolin is the major nucleolar protein of growing eukaryotic cells. It is found associated with intranucleolar chromatin and pre-ribosomal particles.

Note: This product is for in vitro research use only