

EPHX2 Rabbit mAb

Catalog No: #60144

Package Size: #60144-1 50ul #60144-2 100ul

Orders: order@signalwayantibody.comSupport: tech@signalwayantibody.com

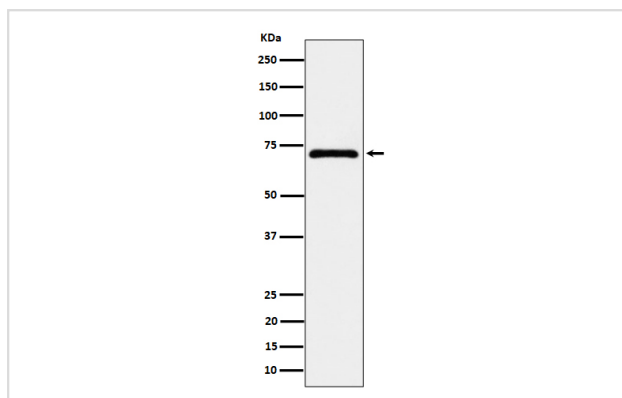
Description

Product Name	EPHX2 Rabbit mAb
Host Species	Rabbit
Clonality	Monoclonal
Isotype	Rabbit IgG
Purification	Affinity-chromatography
Applications	WB
Species Reactivity	Human
Specificity	EPHX2 Antibody detects endogenous levels of total EPHX2
Immunogen Description	A synthesized peptide derived from human EPHX2
Other Names	CEH; EPHX2; Epoxide hydrolase 2; SHE;
Accession No.	Uniprot:P34913
Uniprot	P34913
Formulation	Rabbit IgG in phosphate buffered saline , pH 7.4, 150mM NaCl, 0.02% sodium azide and 50% glycerol.
Storage	Store at +4°C short term. Store at -20°C long term. Avoid freeze / thaw cycle.

Application Details

WB 1:500~1:2000

Images



Western blot analysis of EPHX2 expression in MCF7 cell lysate.

Product Description

Acts on epoxides (alkene oxides, oxiranes) and arene oxides. Plays a role in xenobiotic metabolism by degrading potentially toxic epoxides. Also determines steady-state levels of physiological mediators. Has low phosphatase activity.

Background

Acts on epoxides (alkene oxides, oxiranes) and arene oxides. Plays a role in xenobiotic metabolism by degrading potentially toxic epoxides. Also determines steady-state levels of physiological mediators. Has low phosphatase activity.

Note: This product is for in vitro research use only