

SLC12A1 / NKCC2 Rabbit mAb

Catalog No: #60154

Package Size: #60154-1 50ul #60154-2 100ul

Orders: order@signalwayantibody.com

Support: tech@signalwayantibody.com

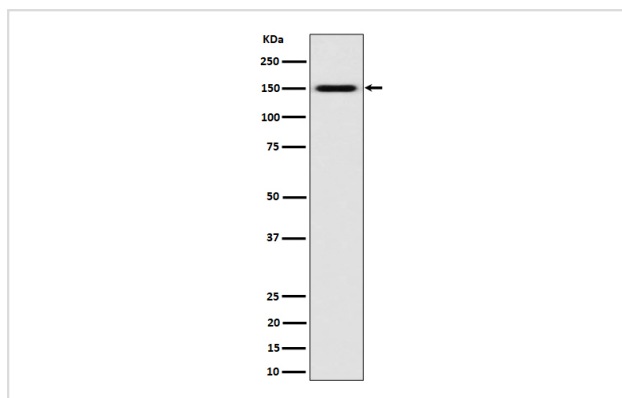
Description

Product Name	SLC12A1 / NKCC2 Rabbit mAb
Host Species	Rabbit
Clonality	Monoclonal
Isotype	Rabbit IgG
Purification	Affinity-chromatography
Applications	WB
Species Reactivity	Human
Specificity	SLC12A1 / NKCC2 Antibody detects endogenous levels of total SLC12A1 / NKCC2
Immunogen Description	A synthesized peptide derived from human SLC12A1 / NKCC2
Other Names	BSC1; NKCC2; Slc12a1;
Accession No.	Uniprot:Q13621
Uniprot	Q13621
Formulation	Rabbit IgG in phosphate buffered saline , pH 7.4, 150mM NaCl, 0.02% sodium azide and 50% glycerol.
Storage	Store at +4°C short term. Store at -20°C long term. Avoid freeze / thaw cycle.

Application Details

WB 1:500~1:2000

Images



Western blot analysis of SLC12A1 / NKCC2 expression in K562 cell lysate.

Product Description

May play an important role in cell growth and/or transcription.

Background

May play an important role in cell growth and/or transcription.

Note: This product is for in vitro research use only