

TSFM Rabbit mAb

Catalog No: #60156

Package Size: #60156-1 50ul #60156-2 100ul

Orders: order@signalwayantibody.com

Support: tech@signalwayantibody.com

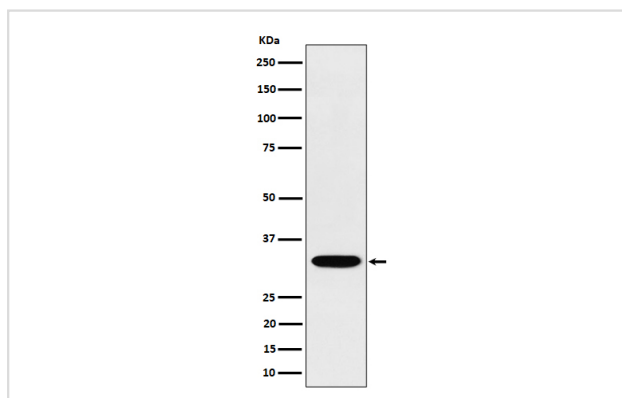
Description

Product Name	TSFM Rabbit mAb
Host Species	Rabbit
Clonality	Monoclonal
Isotype	Rabbit IgG
Purification	Affinity-chromatography
Applications	WB ICC/IF IP
Species Reactivity	Human Mouse Rat
Specificity	TSFM Antibody detects endogenous levels of total TSFM
Immunogen Description	A synthesized peptide derived from human TSFM
Other Names	COXPD3; EFTS; EFTSMT; TSFM; TSMT;
Accession No.	Uniprot:P43897
Uniprot	P43897
Calculated MW	32kDa
Formulation	Rabbit IgG in phosphate buffered saline , pH 7.4, 150mM NaCl, 0.02% sodium azide and 50% glycerol.
Storage	Store at +4°C short term. Store at -20°C long term. Avoid freeze / thaw cycle.

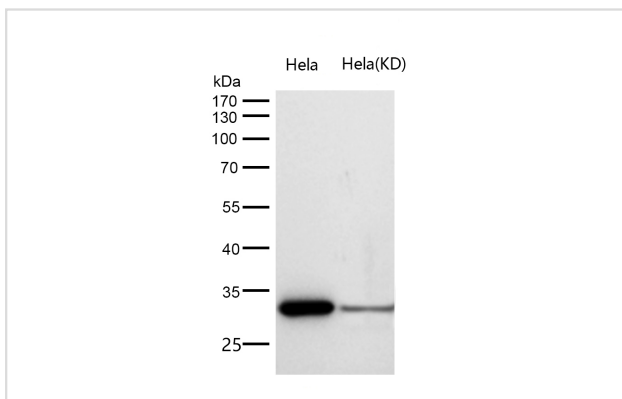
Application Details

WB 1:500~1:2000 ICC/IF 1:50~1:200 IP 1:50

Images



Western blot analysis of TSFM expression in Jurkat cell lysate.



All lanes use the Antibody at 1:1K dilution for 1 hour at room temperature.

Product Description

Associates with the EF-Tu.GDP complex and induces the exchange of GDP to GTP. It remains bound to the aminoacyl-tRNA.EF-Tu.GTP complex up to the GTP hydrolysis stage on the ribosome.

Background

Associates with the EF-Tu.GDP complex and induces the exchange of GDP to GTP. It remains bound to the aminoacyl-tRNA.EF-Tu.GTP complex up to the GTP hydrolysis stage on the ribosome.

Note: This product is for in vitro research use only