

RBMXL2 Rabbit mAb

Catalog No: #60160

Package Size: #60160-1 50ul #60160-2 100ul

Orders: order@signalwayantibody.com

Support: tech@signalwayantibody.com

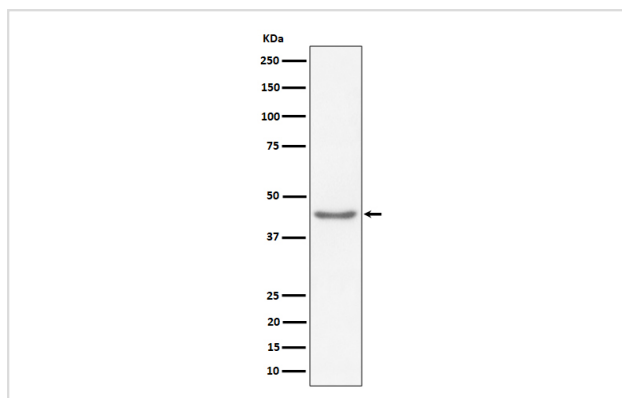
Description

Product Name	RBMXL2 Rabbit mAb
Host Species	Rabbit
Clonality	Monoclonal
Isotype	Rabbit IgG
Purification	Affinity-chromatography
Applications	WB ICC/IF IP
Species Reactivity	Human Mouse Rat
Specificity	RBMXL2 Antibody detects endogenous levels of total RBMXL2
Immunogen Description	A synthesized peptide derived from human RBMXL2
Other Names	HNRNPGT; HNRPGT; RBMXL2;
Accession No.	Uniprot:O75526
Uniprot	O75526
Formulation	Rabbit IgG in phosphate buffered saline , pH 7.4, 150mM NaCl, 0.02% sodium azide and 50% glycerol.
Storage	Store at +4°C short term. Store at -20°C long term. Avoid freeze / thaw cycle.

Application Details

WB 1:500~1:2000 ICC/IF 1:50~1:200 IP 1:50

Images



Western blot analysis of RBMXL2 expression in HeLa cell lysate.

Product Description

Contains 1 RRM (RNA recognition motif) domain.

Background

Contains 1 RRM (RNA recognition motif) domain.

Note: This product is for in vitro research use only