

RPL10A Rabbit mAb

Catalog No: #60163

Package Size: #60163-1 50ul #60163-2 100ul

Orders: order@signalwayantibody.com

Support: tech@signalwayantibody.com

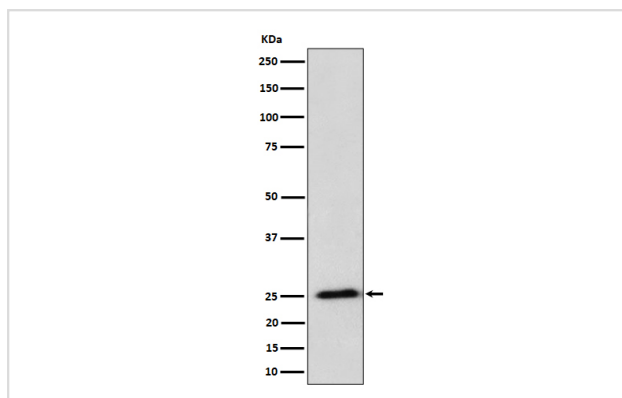
Description

Product Name	RPL10A Rabbit mAb
Host Species	Rabbit
Clonality	Monoclonal
Isotype	Rabbit IgG
Purification	Affinity-chromatography
Applications	WB IHC ICC/IF FC
Species Reactivity	Human Mouse Rat
Specificity	RPL10A Antibody detects endogenous levels of total RPL10A
Immunogen Description	A synthesized peptide derived from human RPL10A
Other Names	CSA19; L10A; NEDD6; rpl10a;
Accession No.	Uniprot:P62906
Uniprot	P62906
Formulation	Rabbit IgG in phosphate buffered saline , pH 7.4, 150mM NaCl, 0.02% sodium azide and 50% glycerol.
Storage	Store at +4°C short term. Store at -20°C long term. Avoid freeze / thaw cycle.

Application Details

WB 1:500~1:2000 IHC 1:50~1:200 ICC/IF 1:50~1:200 FC 1:50

Images



Western blot analysis of RPL10A expression in HeLa cell lysate.

Product Description

Component of the large ribosomal subunit.

Background

Component of the large ribosomal subunit.

Note: This product is for in vitro research use only