

IQGAP2 Rabbit mAb

Catalog No: #60170

Package Size: #60170-1 50ul #60170-2 100ul

Orders: order@signalwayantibody.com

Support: tech@signalwayantibody.com

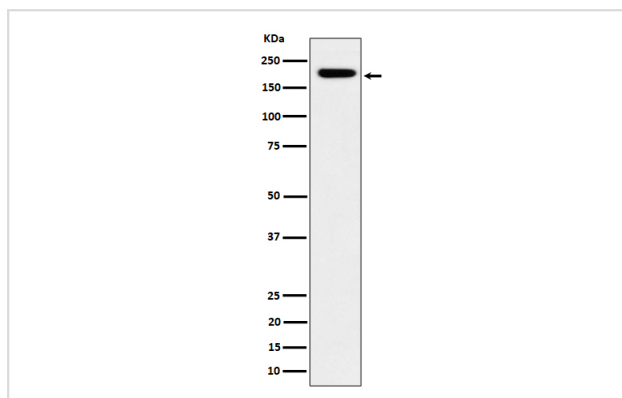
Description

Product Name	IQGAP2 Rabbit mAb
Host Species	Rabbit
Clonality	Monoclonal
Isotype	Rabbit IgG
Purification	Affinity-chromatography
Applications	WB IHC
Species Reactivity	Human
Specificity	IQGAP2 Antibody detects endogenous levels of total IQGAP2
Immunogen Description	A synthesized peptide derived from human IQGAP2
Other Names	Iqgap2;
Accession No.	Uniprot:Q13576
Uniprot	Q13576
Formulation	Rabbit IgG in phosphate buffered saline , pH 7.4, 150mM NaCl, 0.02% sodium azide and 50% glycerol.
Storage	Store at +4°C short term. Store at -20°C long term. Avoid freeze / thaw cycle.

Application Details

WB 1:500~1:2000 IHC 1:50~1:200

Images



Western blot analysis of IQGAP2 expression in HepG2 cell lysate.

Product Description

Binds to activated CDC42 and RAC1 but does not seem to stimulate their GTPase activity. Associates with calmodulin.

Background

Binds to activated CDC42 and RAC1 but does not seem to stimulate their GTPase activity. Associates with calmodulin.

Note: This product is for in vitro research use only