

## MS4A14 Rabbit mAb

Catalog No: #60178

Package Size: #60178-1 50ul #60178-2 100ul

Orders: order@signalwayantibody.com

Support: tech@signalwayantibody.com

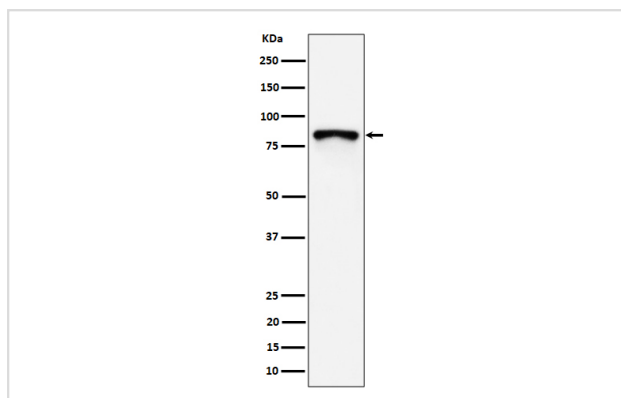
## Description

Product Name	MS4A14 Rabbit mAb
Host Species	Rabbit
Clonality	Monoclonal
Isotype	Rabbit IgG
Purification	Affinity-chromatography
Applications	WB
Species Reactivity	Human
Specificity	MS4A14 Antibody detects endogenous levels of total MS4A14
Immunogen Description	A synthesized peptide derived from human MS4A14
Other Names	MS4A13; MS4A16; NYDSP21;
Accession No.	Uniprot:Q96JA4
Uniprot	Q96JA4
Formulation	Rabbit IgG in phosphate buffered saline , pH 7.4, 150mM NaCl, 0.02% sodium azide and 50% glycerol.
Storage	Store at +4°C short term. Store at -20°C long term. Avoid freeze / thaw cycle.

## Application Details

WB 1:500~1:2000

## Images



Western blot analysis of MS4A14 expression in MCF7 cell lysate.

## Product Description

MS4A14 may be involved in signal transduction as a component of a multimeric receptor complex.

## Background

MS4A14 may be involved in signal transduction as a component of a multimeric receptor complex.

---

Note: This product is for in vitro research use only