

PTPRR Rabbit mAb

Catalog No: #60191

Package Size: #60191-1 50ul #60191-2 100ul

Orders: order@signalwayantibody.com

Support: tech@signalwayantibody.com

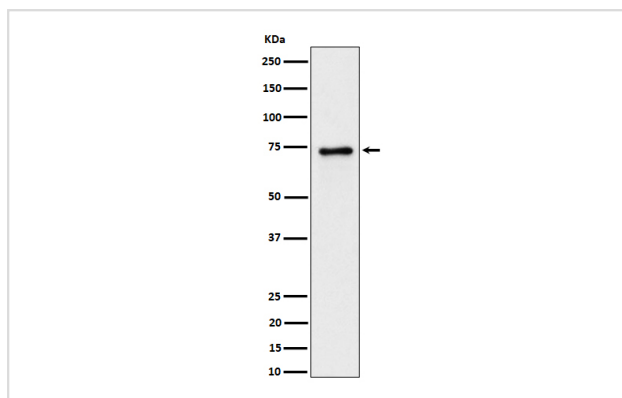
Description

Product Name	PTPRR Rabbit mAb
Host Species	Rabbit
Clonality	Monoclonal
Isotype	Rabbit IgG
Purification	Affinity-chromatography
Applications	WB IHC
Species Reactivity	Human Mouse Rat
Specificity	PTPRR Antibody detects endogenous levels of total PTPRR
Immunogen Description	A synthesized peptide derived from human PTPRR
Other Names	ECPTP; NC PTPCOM1; PTPBR7; PTPRQ; PTPRR; PTPSL; Receptor type tyrosine protein phosphatase R;
Accession No.	Uniprot:Q15256
Uniprot	Q15256
Formulation	Rabbit IgG in phosphate buffered saline , pH 7.4, 150mM NaCl, 0.02% sodium azide and 50% glycerol.
Storage	Store at +4°C short term. Store at -20°C long term. Avoid freeze / thaw cycle.

Application Details

WB 1:500~1:2000 IHC 1:50~1:200

Images



Western blot analysis of PTPRR expression in mouse brain lysate.

Product Description

Sequesters mitogen-activated protein kinases (MAPKs) such as MAPK1, MAPK3 and MAPK14 in the cytoplasm in an inactive form. The MAPKs bind to a dephosphorylated kinase interacting motif, phosphorylation of which by the protein kinase A complex releases the MAPKs for activation and translocation into the nucleus.

Background

Sequesters mitogen-activated protein kinases (MAPKs) such as MAPK1, MAPK3 and MAPK14 in the cytoplasm in an inactive form. The MAPKs bind to a dephosphorylated kinase interacting motif, phosphorylation of which by the protein kinase A complex releases the MAPKs for activation and translocation into the nucleus.

Note: This product is for in vitro research use only