

AZI2 Rabbit mAb

Catalog No: #60199

Package Size: #60199-1 50ul #60199-2 100ul

Orders: order@signalwayantibody.com

Support: tech@signalwayantibody.com

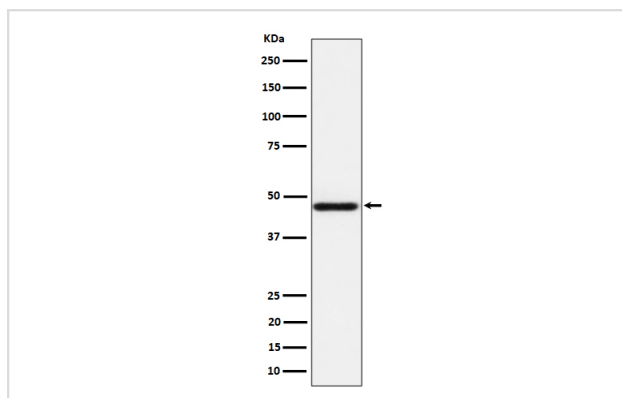
Description

Product Name	AZI2 Rabbit mAb
Host Species	Rabbit
Clonality	Monoclonal
Isotype	Rabbit IgG
Purification	Affinity-chromatography
Applications	WB ICC/IF
Species Reactivity	Human Mouse Rat
Specificity	AZI2 Antibody detects endogenous levels of total AZI2
Immunogen Description	A synthesized peptide derived from human AZI2
Other Names	AZ2; AZI2; Nak associated protein 1; NAP1; TILP;
Accession No.	Uniprot:Q9H6S1
Uniprot	Q9H6S1
Formulation	Rabbit IgG in phosphate buffered saline , pH 7.4, 150mM NaCl, 0.02% sodium azide and 50% glycerol.
Storage	Store at +4°C short term. Store at -20°C long term. Avoid freeze / thaw cycle.

Application Details

WB 1:500~1:2000 ICC/IF 1:50~1:200

Images



Western blot analysis of AZI2 expression in HeLa cell lysate.

Product Description

Activates serine/threonine-protein kinase TBK1 and facilitates its oligomerization. Enhances the phosphorylation of NF-kappa-B p65 subunit RELA by TBK1. Promotes TBK1-induced as well as TNF-alpha or PMA-induced activation of NF-kappa-B. Participates in IFN-beta promoter activation via TICAM1.

Background

Activates serine/threonine-protein kinase TBK1 and facilitates its oligomerization. Enhances the phosphorylation of NF-kappa-B p65 subunit RELA by TBK1. Promotes TBK1-induced as well as TNF-alpha or PMA-induced activation of NF-kappa-B. Participates in IFN-beta promoter activation via TICAM1.

Note: This product is for in vitro research use only