

Septin 8 Rabbit mAb

Catalog No: #60200

Package Size: #60200-1 50ul #60200-2 100ul

Orders: order@signalwayantibody.comSupport: tech@signalwayantibody.com

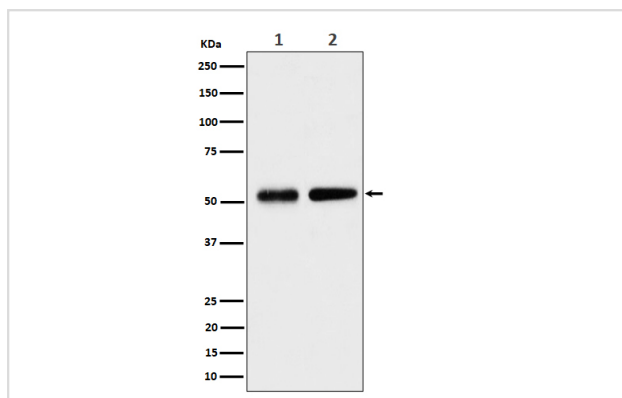
Description

Product Name	Septin 8 Rabbit mAb
Host Species	Rabbit
Clonality	Monoclonal
Isotype	Rabbit IgG
Purification	Affinity-chromatography
Applications	WB IHC ICC/IF IP FC
Species Reactivity	Human Mouse Rat
Specificity	Septin 8 Antibody detects endogenous levels of total Septin 8
Immunogen Description	A synthesized peptide derived from human Septin 8
Other Names	SEP2; SEPT8; Septin8;
Accession No.	Uniprot:Q92599
Uniprot	Q92599
Formulation	Rabbit IgG in phosphate buffered saline , pH 7.4, 150mM NaCl, 0.02% sodium azide and 50% glycerol.
Storage	Store at +4°C short term. Store at -20°C long term. Avoid freeze / thaw cycle.

Application Details

WB 1:500~1:2000 IHC 1:50~1:200 ICC/IF 1:50~1:200 IP 1:50 FC 1:50

Images



Western blot analysis of Septin 8 expression in (1) HeLa cell lysate; (2) NIH/3T3 cell lysate.

Product Description

Septin 8 (SEPT8) is a member of the highly conserved septin family. Septins are 40- to 60-kD GTPases that assemble as filamentous scaffolds. They are involved in the organization of submembranous structures, in neuronal polarity, and in vesicle trafficking. There are 3 isoforms produced by alternative splicing.

Background

Septin 8 (SEPT8) is a member of the highly conserved septin family. Septins are 40- to 60-kD GTPases that assemble as filamentous scaffolds. They are involved in the organization of submembranous structures, in neuronal polarity, and in vesicle trafficking. There are 3 isoforms produced by alternative splicing.

Note: This product is for in vitro research use only