

Nesprin3 Rabbit mAb

Catalog No: #60212

Package Size: #60212-1 50ul #60212-2 100ul

Orders: order@signalwayantibody.com

Support: tech@signalwayantibody.com

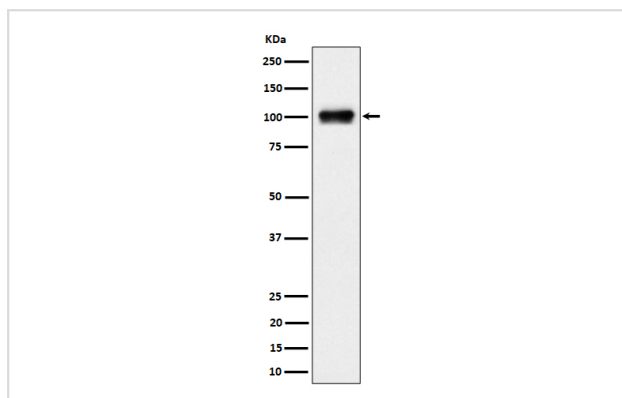
Description

Product Name	Nesprin3 Rabbit mAb
Host Species	Rabbit
Clonality	Monoclonal
Isotype	Rabbit IgG
Purification	Affinity-chromatography
Applications	WB
Species Reactivity	Human
Specificity	Nesprin3 Antibody detects endogenous levels of total Nesprin3
Immunogen Description	A synthesized peptide derived from human Nesprin3
Other Names	C14orf49; Nesp3; Nesprin 3; NET53; SYNE3;
Accession No.	Uniprot:Q6ZMZ3
Uniprot	Q6ZMZ3
Formulation	Rabbit IgG in phosphate buffered saline , pH 7.4, 150mM NaCl, 0.02% sodium azide and 50% glycerol.
Storage	Store at +4°C short term. Store at -20°C long term. Avoid freeze / thaw cycle.

Application Details

WB 1:500~1:2000

Images



Western blot analysis of Nesprin3 expression in 293 cell lysate.

Product Description

Component of SUN-protein-containing multivariate complexes also called LINC complexes which link the nucleoskeleton and cytoskeleton by providing versatile outer nuclear membrane attachment sites for cytoskeletal filaments.

Background

Component of SUN-protein-containing multivariate complexes also called LINC complexes which link the nucleoskeleton and cytoskeleton by providing versatile outer nuclear membrane attachment sites for cytoskeletal filaments.

Note: This product is for in vitro research use only