

Nesprin3 Rabbit mAb

Catalog No: #60214

Package Size: #60214-1 50ul #60214-2 100ul

Orders: order@signalwayantibody.com

Support: tech@signalwayantibody.com

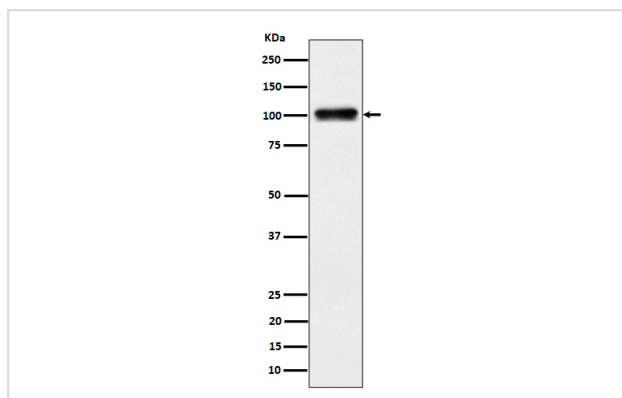
Description

Product Name	Nesprin3 Rabbit mAb
Host Species	Rabbit
Clonality	Monoclonal
Isotype	Rabbit IgG
Purification	Affinity-chromatography
Applications	WB
Species Reactivity	Human
Specificity	Nesprin3 Antibody detects endogenous levels of total Nesprin3
Immunogen Description	A synthesized peptide derived from human Nesprin3
Other Names	C14orf49; Nesp3; Nesprin 3; NET53; SYNE3;
Accession No.	Uniprot:Q6ZMZ3
Uniprot	Q6ZMZ3
Formulation	Rabbit IgG in phosphate buffered saline , pH 7.4, 150mM NaCl, 0.02% sodium azide and 50% glycerol.
Storage	Store at +4°C short term. Store at -20°C long term. Avoid freeze / thaw cycle.

Application Details

WB 1:500~1:2000

Images



Western blot analysis of Nesprin3 expression in 293 cell lysate.

Product Description

Component of SUN-protein-containing multivariate complexes also called LINC complexes which link the nucleoskeleton and cytoskeleton by providing versatile outer nuclear membrane attachment sites for cytoskeletal filaments. Involved in the maintenance of nuclear organization and structural integrity.

Background

Component of SUN-protein-containing multivariate complexes also called LINC complexes which link the nucleoskeleton and cytoskeleton by providing versatile outer nuclear membrane attachment sites for cytoskeletal filaments. Involved in the maintenance of nuclear organization and structural integrity.

Note: This product is for in vitro research use only