

RAB45 Rabbit mAb

Catalog No: #60220

Package Size: #60220-1 50ul #60220-2 100ul

Orders: order@signalwayantibody.com

Support: tech@signalwayantibody.com

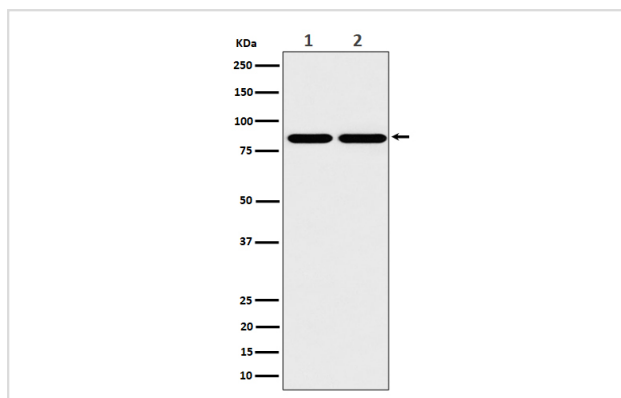
Description

Product Name	RAB45 Rabbit mAb
Host Species	Rabbit
Clonality	Monoclonal
Isotype	Rabbit IgG
Purification	Affinity-chromatography
Applications	WB ICC/IF FC
Species Reactivity	Human Mouse Rat
Specificity	RAB45 Antibody detects endogenous levels of total RAB45
Immunogen Description	A synthesized peptide derived from human RAB45
Other Names	RAB45;
Accession No.	Uniprot:Q8IZ41
Uniprot	Q8IZ41
Formulation	Rabbit IgG in phosphate buffered saline , pH 7.4, 150mM NaCl, 0.02% sodium azide and 50% glycerol.
Storage	Store at +4°C short term. Store at -20°C long term. Avoid freeze / thaw cycle.

Application Details

WB 1:500~1:2000 ICC/IF 1:50~1:200 FC 1:50

Images



Western blot analysis of RAB45 expression in (1) A431 cell lysate; (2) Raw264.7 cell lysate.

Product Description

Binds predominantly GDP, and also GTP (PubMed:17448446). Acts as a dynein adapter protein that activates dynein-mediated transport and dynein-dynactin motility on microtubules (PubMed:30814157).

Background

Binds predominantly GDP, and also GTP (PubMed:17448446). Acts as a dynein adapter protein that activates dynein-mediated transport and dynein-dynactin motility on microtubules (PubMed:30814157).

Note: This product is for in vitro research use only