

## HMGCL Rabbit mAb

Catalog No: #60222

Package Size: #60222-1 50ul #60222-2 100ul

Orders: order@signalwayantibody.com

Support: tech@signalwayantibody.com

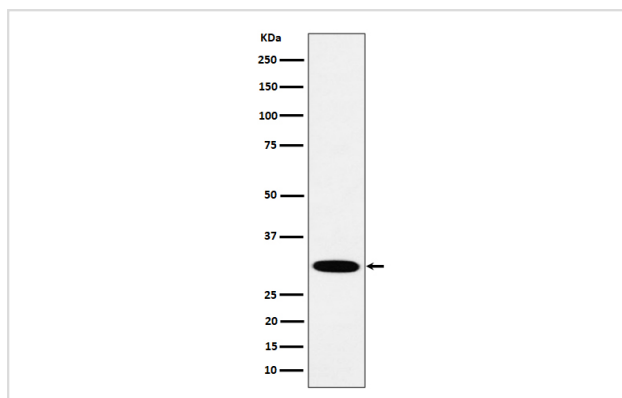
## Description

Product Name	HMGCL Rabbit mAb
Host Species	Rabbit
Clonality	Monoclonal
Isotype	Rabbit IgG
Purification	Affinity-chromatography
Applications	WB IHC
Species Reactivity	Human
Specificity	HMGCL Antibody detects endogenous levels of total HMGCL
Immunogen Description	A synthesized peptide derived from human HMGCL
Other Names	HMG CoA lyase; HMGCL; Hydroxymethylglutaricaciduria; MS725;
Accession No.	Uniprot:P35914
Uniprot	P35914
Formulation	Rabbit IgG in phosphate buffered saline , pH 7.4, 150mM NaCl, 0.02% sodium azide and 50% glycerol.
Storage	Store at +4°C short term. Store at -20°C long term. Avoid freeze / thaw cycle.

## Application Details

WB 1:500~1:2000 IHC 1:50~1:200

## Images



Western blot analysis of HMGCL expression in A431 cell lysate.

## Product Description

Involved in the catabolism of branched amino acids such as leucine.

## Background

Involved in the catabolism of branched amino acids such as leucine.

---

Note: This product is for in vitro research use only