

## PPP2R5E Rabbit mAb

Catalog No: #60229

Package Size: #60229-1 50ul #60229-2 100ul

Orders: order@signalwayantibody.com

Support: tech@signalwayantibody.com

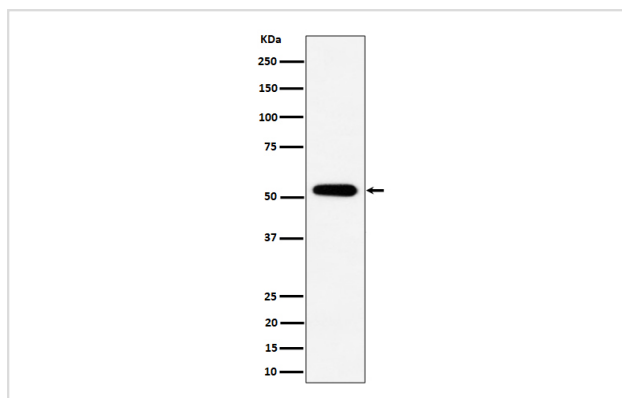
## Description

Product Name	PPP2R5E Rabbit mAb
Host Species	Rabbit
Clonality	Monoclonal
Isotype	Rabbit IgG
Purification	Affinity-chromatography
Applications	WB IHC ICC/IF IP
Species Reactivity	Human
Specificity	PPP2R5E Antibody detects endogenous levels of total PPP2R5E
Immunogen Description	A synthesized peptide derived from human PPP2R5E
Other Names	PPP2R5E;
Accession No.	Uniprot:Q16537
Uniprot	Q16537
Formulation	Rabbit IgG in phosphate buffered saline , pH 7.4, 150mM NaCl, 0.02% sodium azide and 50% glycerol.
Storage	Store at +4°C short term. Store at -20°C long term. Avoid freeze / thaw cycle.

## Application Details

WB 1:500~1:2000 IHC 1:50~1:200 ICC/IF 1:50~1:200 IP 1:50

## Images



Western blot analysis of PPP2R5E expression in 293 cell lysate.

## Product Description

The B regulatory subunit might modulate substrate selectivity and catalytic activity, and also might direct the localization of the catalytic enzyme to a particular subcellular compartment.

## Background

---

The B regulatory subunit might modulate substrate selectivity and catalytic activity, and also might direct the localization of the catalytic enzyme to a particular subcellular compartment.

---

Note: This product is for in vitro research use only