

## ATE1 Rabbit mAb

Catalog No: #60232

Package Size: #60232-1 50ul #60232-2 100ul

Orders: order@signalwayantibody.com

Support: tech@signalwayantibody.com

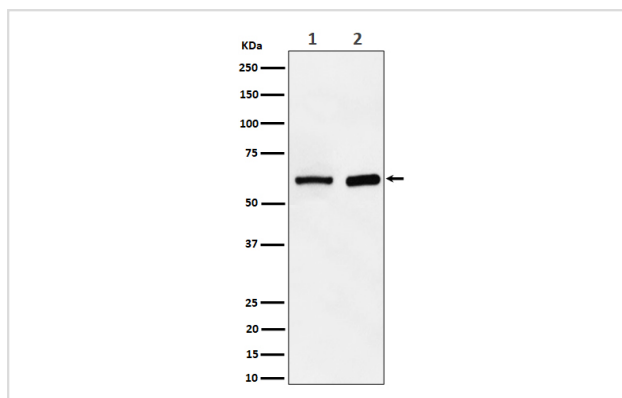
## Description

Product Name	ATE1 Rabbit mAb
Host Species	Rabbit
Clonality	Monoclonal
Isotype	Rabbit IgG
Purification	Affinity-chromatography
Applications	WB IHC
Species Reactivity	Human Mouse Rat
Specificity	ATE1 Antibody detects endogenous levels of total ATE1
Immunogen Description	A synthesized peptide derived from human ATE1
Other Names	Arginyltransferase 1; Ate1; R transferase 1;
Accession No.	Uniprot:O95260
Uniprot	O95260
Formulation	Rabbit IgG in phosphate buffered saline , pH 7.4, 150mM NaCl, 0.02% sodium azide and 50% glycerol.
Storage	Store at +4°C short term. Store at -20°C long term. Avoid freeze / thaw cycle.

## Application Details

WB 1:500~1:2000 IHC 1:50~1:200

## Images



Western blot analysis of ATE1 expression in (1) HepG2 cell lysate; (2) Mouse spleen lysate.

## Product Description

Involved in the post-translational conjugation of arginine to the N-terminal aspartate or glutamate of a protein. This arginylation is required for degradation of the protein via the ubiquitin pathway. Does not arginylate cysteine residues.

## Background

---

Involved in the post-translational conjugation of arginine to the N-terminal aspartate or glutamate of a protein. This arginylation is required for degradation of the protein via the ubiquitin pathway. Does not arginylate cysteine residues.

---

Note: This product is for in vitro research use only