

NSDHL Rabbit mAb

Catalog No: #60236

Package Size: #60236-1 50ul #60236-2 100ul

Orders: order@signalwayantibody.com

Support: tech@signalwayantibody.com

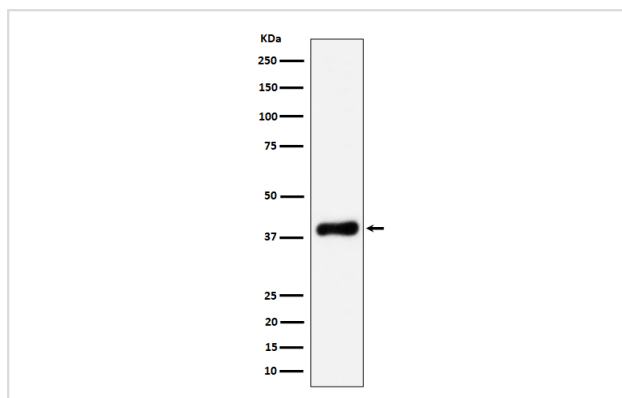
Description

Product Name	NSDHL Rabbit mAb
Host Species	Rabbit
Clonality	Monoclonal
Isotype	Rabbit IgG
Purification	Affinity-chromatography
Applications	WB IP
Species Reactivity	Human Mouse Rat
Specificity	NSDHL Antibody detects endogenous levels of total NSDHL
Immunogen Description	A synthesized peptide derived from human NSDHL
Other Names	NSDHL; SDR31E1; XAP104;
Accession No.	Uniprot:Q15738
Uniprot	Q15738
Formulation	Rabbit IgG in phosphate buffered saline , pH 7.4, 150mM NaCl, 0.02% sodium azide and 50% glycerol.
Storage	Store at +4°C short term. Store at -20°C long term. Avoid freeze / thaw cycle.

Application Details

WB 1:500~1:2000 IP 1:50

Images



Western blot analysis of NSDHL expression in HeLa cell lysate.

Product Description

Catalyzes the NAD(P)⁺-dependent oxidative decarboxylation of the C4 methyl groups of 4- α -carboxysterols in post-squalene cholesterol biosynthesis (By similarity).

Background

Catalyzes the NAD(P)⁺-dependent oxidative decarboxylation of the C4 methyl groups of 4- α -carboxysterols in post-squalene cholesterol biosynthesis (By similarity).

Note: This product is for in vitro research use only