

## TIM44 Rabbit mAb

Catalog No: #60240

Package Size: #60240-1 50ul #60240-2 100ul

Orders: order@signalwayantibody.com

Support: tech@signalwayantibody.com

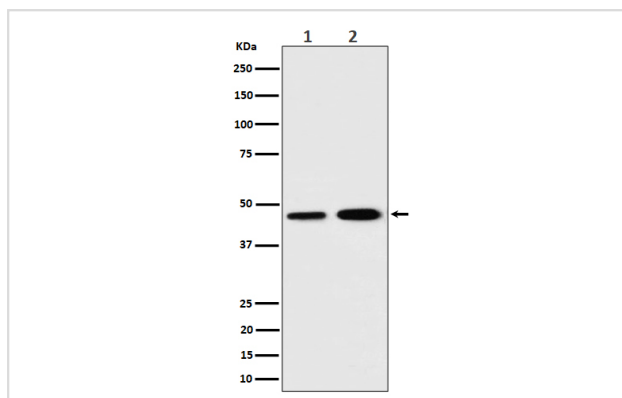
## Description

Product Name	TIM44 Rabbit mAb
Host Species	Rabbit
Clonality	Monoclonal
Isotype	Rabbit IgG
Purification	Affinity-chromatography
Applications	WB ICC/IF IP FC
Species Reactivity	Human Rat
Specificity	TIM44 Antibody detects endogenous levels of total TIM44
Immunogen Description	A synthesized peptide derived from human TIM44
Other Names	MIMT44; TIM44;
Accession No.	Uniprot:O43615
Uniprot	O43615
Formulation	Rabbit IgG in phosphate buffered saline , pH 7.4, 150mM NaCl, 0.02% sodium azide and 50% glycerol.
Storage	Store at +4°C short term. Store at -20°C long term. Avoid freeze / thaw cycle.

## Application Details

WB 1:500~1:2000 ICC/IF 1:50~1:200 IP 1:50 FC 1:50

## Images



Western blot analysis of TIM44 expression in (1) K562 cell lysate; (2) C6 cell lysate.

## Product Description

Essential component of the PAM complex, a complex required for the translocation of transit peptide-containing proteins from the inner membrane into the mitochondrial matrix in an ATP-dependent manner. Recruits mitochondrial HSP70 to drive protein translocation into the matrix using ATP as an energy source.

## Background

---

Essential component of the PAM complex, a complex required for the translocation of transit peptide-containing proteins from the inner membrane into the mitochondrial matrix in an ATP-dependent manner. Recruits mitochondrial HSP70 to drive protein translocation into the matrix using ATP as an energy source.

---

Note: This product is for in vitro research use only