

SLC27A4 Rabbit mAb

Catalog No: #60241

Package Size: #60241-1 50ul #60241-2 100ul

Orders: order@signalwayantibody.com

Support: tech@signalwayantibody.com

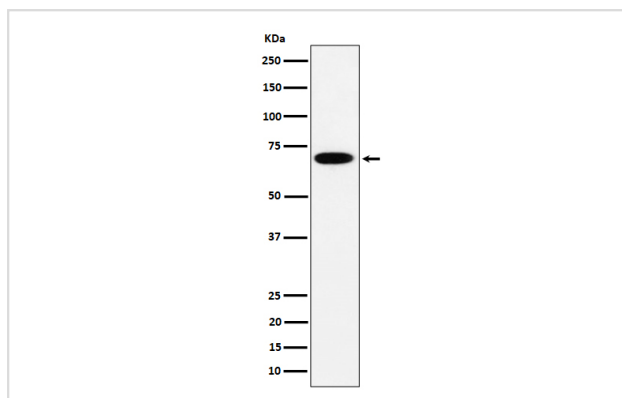
Description

Product Name	SLC27A4 Rabbit mAb
Host Species	Rabbit
Clonality	Monoclonal
Isotype	Rabbit IgG
Purification	Affinity-chromatography
Applications	WB IHC ICC/IF IP
Species Reactivity	Human
Specificity	SLC27A4 Antibody detects endogenous levels of total SLC27A4
Immunogen Description	A synthesized peptide derived from human SLC27A4
Other Names	ACSVL4; FATP4; IPS; S27A4; SLC27 A4;
Accession No.	Uniprot:Q6P1M0
Uniprot	Q6P1M0
Formulation	Rabbit IgG in phosphate buffered saline , pH 7.4, 150mM NaCl, 0.02% sodium azide and 50% glycerol.
Storage	Store at +4°C short term. Store at -20°C long term. Avoid freeze / thaw cycle.

Application Details

WB 1:500~1:2000 IHC 1:50~1:200 ICC/IF 1:50~1:200 IP 1:50

Images



Western blot analysis of SLC27A4 expression in HepG2 cell lysate.

Product Description

Involved in translocation of long-chain fatty acids (LFCA) across the plasma membrane (PubMed:12556534, PubMed:21395585). Has acyl-CoA ligase activity for long-chain and very-long-chain fatty acids (VLCFAs) (PubMed:24269233). Appears to be the principal fatty acid transporter in small intestinal enterocytes. Plays a role in the formation of the epidermal barrier. Required for fat absorption in early embryogenesis (By similarity).

Background

Involved in translocation of long-chain fatty acids (LFCA) across the plasma membrane (PubMed:12556534, PubMed:21395585). Has acyl-CoA ligase activity for long-chain and very-long-chain fatty acids (VLCFAs) (PubMed:24269233). Appears to be the principal fatty acid transporter in small intestinal enterocytes. Plays a role in the formation of the epidermal barrier. Required for fat absorption in early embryogenesis (By similarity).

Note: This product is for in vitro research use only