

Serine racemase Rabbit mAb

Catalog No: #60243

Package Size: #60243-1 50ul #60243-2 100ul

Orders: order@signalwayantibody.com

Support: tech@signalwayantibody.com

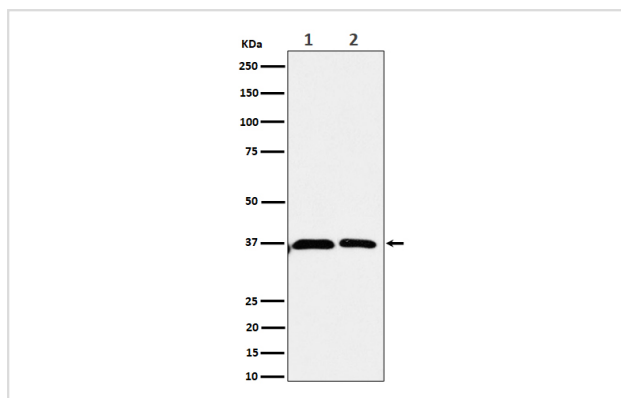
Description

Product Name	Serine racemase Rabbit mAb
Host Species	Rabbit
Clonality	Monoclonal
Isotype	Rabbit IgG
Purification	Affinity-chromatography
Applications	WB
Species Reactivity	Human
Specificity	Serine racemase Antibody detects endogenous levels of total Serine racemase
Immunogen Description	A synthesized peptide derived from human Serine racemase
Other Names	D serine ammonia lyase; ILV1; ISO1; L serine ammonia lyase;
Accession No.	Uniprot:Q9GZT4
Uniprot	Q9GZT4
Formulation	Rabbit IgG in phosphate buffered saline , pH 7.4, 150mM NaCl, 0.02% sodium azide and 50% glycerol.
Storage	Store at +4°C short term. Store at -20°C long term. Avoid freeze / thaw cycle.

Application Details

WB 1:500~1:2000

Images



Western blot analysis of Serine racemase expression in (1) 293 cell lysate; (2) U-87 MG cell lysate.

Product Description

Catalyzes the synthesis of D-serine from L-serine. D-serine is a key coagonist with glutamate at NMDA receptors. Has dehydratase activity towards both L-serine and D-serine.

Background

Catalyzes the synthesis of D-serine from L-serine. D-serine is a key coagonist with glutamate at NMDA receptors. Has dehydratase activity towards both L-serine and D-serine.

Note: This product is for in vitro research use only