

## Meckelin Rabbit mAb

Catalog No: #60247

Package Size: #60247-1 50ul #60247-2 100ul

Orders: order@signalwayantibody.com

Support: tech@signalwayantibody.com

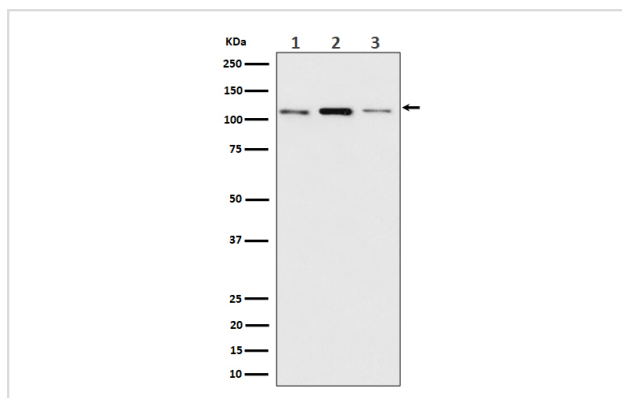
## Description

Product Name	Meckelin Rabbit mAb
Host Species	Rabbit
Clonality	Monoclonal
Isotype	Rabbit IgG
Purification	Affinity-chromatography
Applications	WB IHC ICC/IF FC
Species Reactivity	Human Mouse Rat
Specificity	Meckelin Antibody detects endogenous levels of total Meckelin
Immunogen Description	A synthesized peptide derived from human Meckelin
Other Names	JBTS6; MKS3; NPHP11; TMEM67; TNEM67;
Accession No.	Uniprot:Q5HYA8
Uniprot	Q5HYA8
Formulation	Rabbit IgG in phosphate buffered saline , pH 7.4, 150mM NaCl, 0.02% sodium azide and 50% glycerol.
Storage	Store at +4°C short term. Store at -20°C long term. Avoid freeze / thaw cycle.

## Application Details

WB 1:500~1:2000 IHC 1:50~1:200 ICC/IF 1:50~1:200 FC 1:50

## Images



Western blot analysis of Meckelin expression in (1) MCF7 cell lysate; (2) RAW 264.7 cell lysate; (3) C6 cell lysate.

## Product Description

Meckelin localizes to the primary cilium and to the plasma membrane. It functions in centriole migration to the apical membrane and formation of the primary cilium. Defects in the gene are a cause of Meckel syndrome type 3 (MKS3) and Joubert syndrome type 6 (JBTS6).

## Background

---

Meckelin localizes to the primary cilium and to the plasma membrane. It functions in centriole migration to the apical membrane and formation of the primary cilium. Defects in the gene are a cause of Meckel syndrome type 3 (MKS3) and Joubert syndrome type 6 (JBTS6).

---

Note: This product is for in vitro research use only