

## PREPL Rabbit mAb

Catalog No: #60248

Package Size: #60248-1 50ul #60248-2 100ul

Orders: order@signalwayantibody.com

Support: tech@signalwayantibody.com

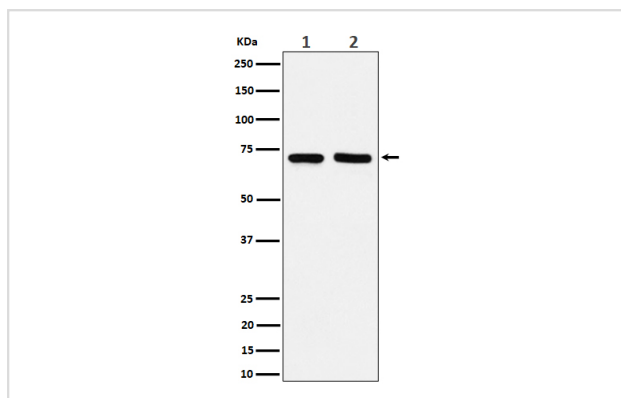
## Description

Product Name	PREPL Rabbit mAb
Host Species	Rabbit
Clonality	Monoclonal
Isotype	Rabbit IgG
Purification	Affinity-chromatography
Applications	WB ICC/IF IP FC
Species Reactivity	Human Mouse Rat
Specificity	PREPL Antibody detects endogenous levels of total PREPL
Immunogen Description	A synthesized peptide derived from human PREPL
Other Names	prepl; Prolyl endopeptidase-like;
Accession No.	Uniprot:Q4J6C6
Uniprot	Q4J6C6
Formulation	Rabbit IgG in phosphate buffered saline , pH 7.4, 150mM NaCl, 0.02% sodium azide and 50% glycerol.
Storage	Store at +4°C short term. Store at -20°C long term. Avoid freeze / thaw cycle.

## Application Details

WB 1:500~1:2000 ICC/IF 1:50~1:200 IP 1:50 FC 1:50

## Images



Western blot analysis of PREPL expression in (1) MCF7 cell lysate; (2) Raw264.7 cell lysate.

## Product Description

Probable serine peptidase whose precise substrate specificity remains unclear. Does not cleave peptides after a arginine or lysine residue.

## Background

Probable serine peptidase whose precise substrate specificity remains unclear. Does not cleave peptides after a arginine or lysine residue.

---

Note: This product is for in vitro research use only