

CD147 Rabbit mAb

Catalog No: #60250

Package Size: #60250-1 50ul #60250-2 100ul

Orders: order@signalwayantibody.com

Support: tech@signalwayantibody.com

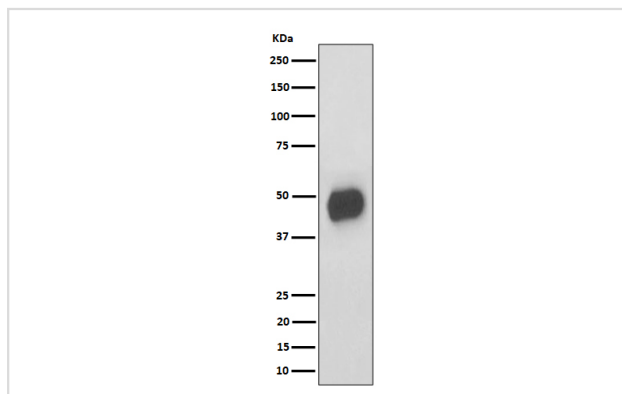
Description

Product Name	CD147 Rabbit mAb
Host Species	Rabbit
Clonality	Monoclonal
Isotype	Rabbit IgG
Purification	Affinity-chromatography
Applications	WB IHC ICC/IF IP
Species Reactivity	Mouse
Specificity	CD147 Antibody detects endogenous levels of total CD147
Immunogen Description	A synthesized peptide derived from human CD147
Other Names	5A11 antigen; Basigin; Blood brain barrier HT7 antigen; Bsg; CD147; Collagenase stimulatory factor; EMMPRIN; Extracellular matrix metalloproteinase inducer; Leukocyte activation antigen M6; Neurothelin; OK blood group; OK blood group antigen; TCSF; Tumor cell derived collagenase stimulatory factor;
Accession No.	Uniprot:P18572(mouse)
Uniprot	P18572(mouse)
Formulation	Rabbit IgG in phosphate buffered saline , pH 7.4, 150mM NaCl, 0.02% sodium azide and 50% glycerol.
Storage	Store at +4°C short term. Store at -20°C long term. Avoid freeze / thaw cycle.

Application Details

WB 1:500~1:2000 IHC 1:50~1:200 ICC/IF 1:50~1:200 IP 1:50

Images



Western blot analysis of CD147 expression in RAW 264.7 cell lysate.

Product Description

Plays pivotal roles in spermatogenesis, embryo implantation, neural network formation and tumor progression. Stimulates adjacent fibroblasts to produce matrix metalloproteinases (MMPS).

Background

Plays pivotal roles in spermatogenesis, embryo implantation, neural network formation and tumor progression. Stimulates adjacent fibroblasts to produce matrix metalloproteinases (MMPS).

Note: This product is for in vitro research use only