

CRABP2 Rabbit mAb

Catalog No: #60251

Package Size: #60251-1 50ul #60251-2 100ul

Orders: order@signalwayantibody.com

Support: tech@signalwayantibody.com

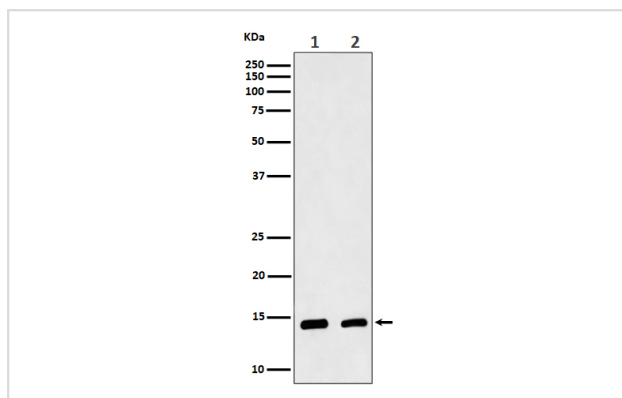
Description

Product Name	CRABP2 Rabbit mAb
Host Species	Rabbit
Clonality	Monoclonal
Isotype	Rabbit IgG
Purification	Affinity-chromatography
Applications	WB IHC ICC/IF FC
Species Reactivity	Human Mouse Rat
Specificity	CRABP2 Antibody detects endogenous levels of total CRABP2
Immunogen Description	A synthesized peptide derived from human CRABP2
Other Names	Cellular retinoic acid binding protein 2; Cellular retinoic acid binding protein II ; Crabp2; CRABPII; RBP6;
Accession No.	Uniprot:P29373
Uniprot	P29373
Formulation	Rabbit IgG in phosphate buffered saline , pH 7.4, 150mM NaCl, 0.02% sodium azide and 50% glycerol.
Storage	Store at +4°C short term. Store at -20°C long term. Avoid freeze / thaw cycle.

Application Details

WB 1:500~1:2000 IHC 1:50~1:200 ICC/IF 1:50~1:200 FC 1:50

Images



Western blot analysis of CRABP2 expression in (1) MCF7 cell lysate; (2) Mouse skin lysate.

Product Description

Transports retinoic acid to the nucleus. Regulates the access of retinoic acid to the nuclear retinoic acid receptors.

Background

Transports retinoic acid to the nucleus. Regulates the access of retinoic acid to the nuclear retinoic acid receptors.

Note: This product is for in vitro research use only