

BCL2L15 Rabbit mAb

Catalog No: #60269

Package Size: #60269-1 50ul #60269-2 100ul

Orders: order@signalwayantibody.com

Support: tech@signalwayantibody.com

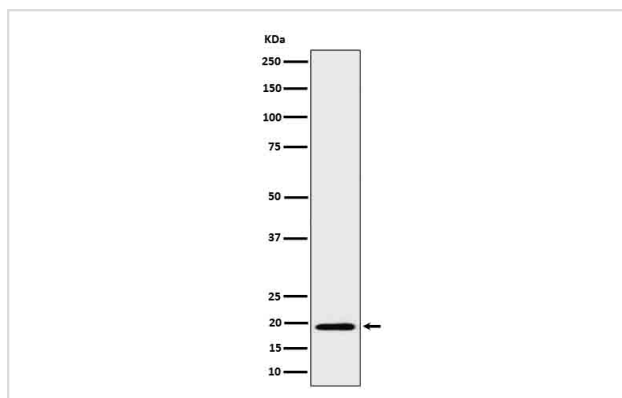
Description

Product Name	BCL2L15 Rabbit mAb
Host Species	Rabbit
Clonality	Monoclonal
Isotype	Rabbit IgG
Purification	Affinity-chromatography
Applications	WB IHC ICC/IF FC
Species Reactivity	Human
Specificity	BCL2L15 Antibody detects endogenous levels of total BCL2L15
Immunogen Description	A synthesized peptide derived from human BCL2L15
Other Names	Bcl-2-like protein 15; Bcl2-L-15; BCL2-like 15; Bcl2l15; Bfk; Gm566; Pro apoptotic Bcl 2 protein;
Accession No.	Uniprot:Q5TBC7
Uniprot	Q5TBC7
Formulation	Rabbit IgG in phosphate buffered saline , pH 7.4, 150mM NaCl, 0.02% sodium azide and 50% glycerol.
Storage	Store at +4°C short term. Store at -20°C long term. Avoid freeze / thaw cycle.

Application Details

WB 1:500~1:2000 IHC 1:50~1:200 ICC/IF 1:50~1:200 FC 1:50

Images



Western blot analysis of BCL2L15 in His-tagged BCL2L15 cell lysate.

Product Description

Predicted to be involved in apoptotic process and regulation of apoptotic process. Predicted to be active in cytosol and nucleus. [provided by Alliance of Genome Resources, Apr 2022]

Background

Predicted to be involved in apoptotic process and regulation of apoptotic process. Predicted to be active in cytosol and nucleus. [provided by Alliance of Genome Resources, Apr 2022]

Note: This product is for in vitro research use only