

RIP2 Rabbit mAb

Catalog No: #60270

Package Size: #60270-1 50ul #60270-2 100ul

Orders: order@signalwayantibody.comSupport: tech@signalwayantibody.com

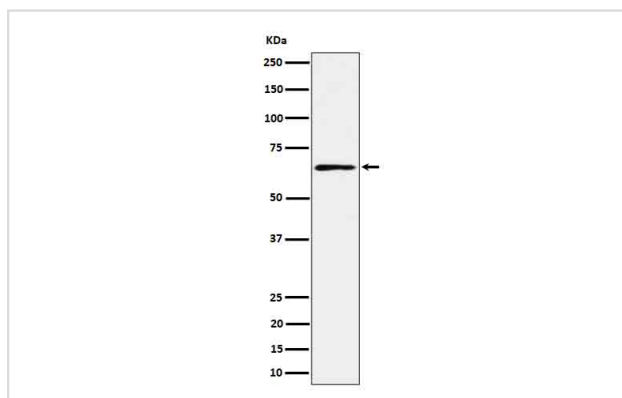
Description

Product Name	RIP2 Rabbit mAb
Host Species	Rabbit
Clonality	Monoclonal
Isotype	Rabbit IgG
Purification	Affinity-chromatography
Applications	WB
Species Reactivity	Human Mouse Rat
Specificity	RIP2 Antibody detects endogenous levels of total RIP2
Immunogen Description	A synthesized peptide derived from human RIP2
Other Names	CARD carrying kinase; CARD3; CARDIAK; CCK; CLARP kinase; GIG30; Growth inhibiting gene 30; Receptor interacting protein 2; RICK; RIP 2; Ripk2; TNFRSF;
Accession No.	Uniprot:O43353
Uniprot	O43353
Formulation	Rabbit IgG in phosphate buffered saline , pH 7.4, 150mM NaCl, 0.02% sodium azide and 50% glycerol.
Storage	Store at +4°C short term. Store at -20°C long term. Avoid freeze / thaw cycle.

Application Details

WB 1:500~1:2000

Images



Western blot analysis of RIP2 in K562 cell lysate.

Product Description

Activates pro-caspase-1 and pro-caspase-8. Potentiates CASP8-mediated apoptosis. Activates NF-kappa-B.

Background

Activates pro-caspase-1 and pro-caspase-8. Potentiates CASP8-mediated apoptosis. Activates NF-kappa-B.

Note: This product is for in vitro research use only