

RalA Rabbit mAb

Catalog No: #60272

Package Size: #60272-1 50ul #60272-2 100ul

Orders: order@signalwayantibody.com

Support: tech@signalwayantibody.com

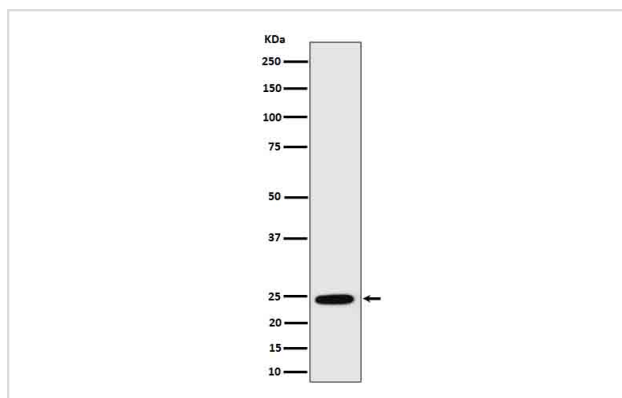
Description

Product Name	RalA Rabbit mAb
Host Species	Rabbit
Clonality	Monoclonal
Isotype	Rabbit IgG
Purification	Affinity-chromatography
Applications	WB IHC
Species Reactivity	Human
Specificity	RalA Antibody detects endogenous levels of total RalA
Immunogen Description	A synthesized peptide derived from human RalA
Other Names	Ral a; RAL; RALA;
Accession No.	Uniprot:P11233
Uniprot	P11233
Formulation	Rabbit IgG in phosphate buffered saline , pH 7.4, 150mM NaCl, 0.02% sodium azide and 50% glycerol.
Storage	Store at +4°C short term. Store at -20°C long term. Avoid freeze / thaw cycle.

Application Details

WB 1:500~1:2000 IHC 1:50~1:200

Images



Western blot analysis of RalA in MCF7 cell lysate.

Product Description

Multifunctional GTPase involved in a variety of cellular processes including gene expression, cell migration, cell proliferation, oncogenic transformation and membrane trafficking. Accomplishes its multiple functions by interacting with distinct downstream effectors.

Background

Multifunctional GTPase involved in a variety of cellular processes including gene expression, cell migration, cell proliferation, oncogenic transformation and membrane trafficking. Accomplishes its multiple functions by interacting with distinct downstream effectors.

Note: This product is for in vitro research use only