

htrA1 Rabbit mAb

Catalog No: #60274

Package Size: #60274-1 50ul #60274-2 100ul

Orders: order@signalwayantibody.com

Support: tech@signalwayantibody.com

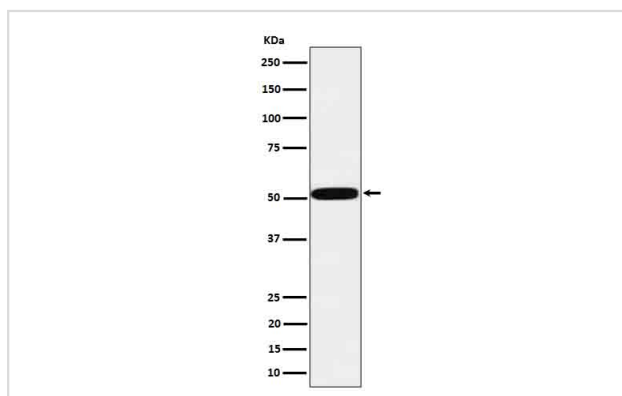
Description

Product Name	htrA1 Rabbit mAb
Host Species	Rabbit
Clonality	Monoclonal
Isotype	Rabbit IgG
Purification	Affinity-chromatography
Applications	WB ICC/IF
Species Reactivity	Human
Specificity	htrA1 Antibody detects endogenous levels of total htrA1
Immunogen Description	A synthesized peptide derived from human htrA1
Other Names	ARMD7; CARASIL; High-temperature requirement A serine peptidase 1; HtrA; HtrA serine peptidase 1; HTRA1; IGFBP5 protease; ORF480; Protease serine 11 (IGF binding); protease serine 11; PRSS11; Serine protease 11; Serine protease HTRA1;
Accession No.	Uniprot:Q92743
Uniprot	Q92743
Formulation	Rabbit IgG in phosphate buffered saline , pH 7.4, 150mM NaCl, 0.02% sodium azide and 50% glycerol.
Storage	Store at +4°C short term. Store at -20°C long term. Avoid freeze / thaw cycle.

Application Details

WB 1:500~1:2000 ICC/IF 1:50~1:200

Images



Western blot analysis of htrA1 in MCF7 cell lysate.

Product Description

Protease that regulate the availability of nsulin-like growth factors (IGFs) by cleaving IGF-binding proteins. Represses signaling by TGF-beta family members.

Background

Protease that regulate the availability of insulin-like growth factors (IGFs) by cleaving IGF-binding proteins. Represses signaling by TGF-beta family members.

Note: This product is for in vitro research use only