

Ube1L / UBA7 Rabbit mAb

Catalog No: #60275

Package Size: #60275-1 50ul #60275-2 100ul

Orders: order@signalwayantibody.com

Support: tech@signalwayantibody.com

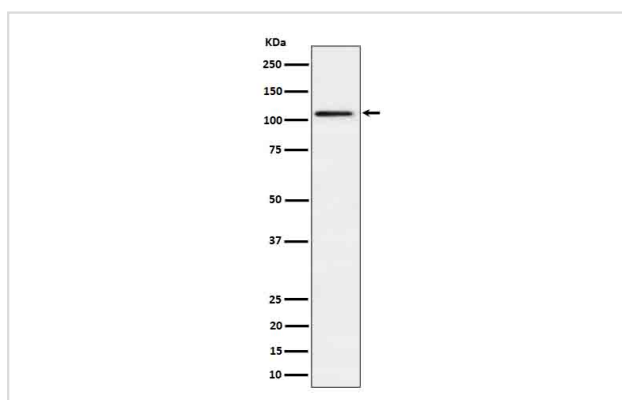
Description

| | |
|-----------------------|--|
| Product Name | Ube1L / UBA7 Rabbit mAb |
| Host Species | Rabbit |
| Clonality | Monoclonal |
| Isotype | Rabbit IgG |
| Purification | Affinity-chromatography |
| Applications | WB IHC FC |
| Species Reactivity | Human Mouse Rat |
| Specificity | Ube1L / UBA7 Antibody detects endogenous levels of total Ube1L / UBA7 |
| Immunogen Description | A synthesized peptide derived from human Ube1L / UBA7 |
| Other Names | UBA1B; UBA7; UBE1L; UBE2; Ubiquitin activating enzyme 2; Ubiquitin-activating enzyme 7; Ubiquitin-activating enzyme E1 homolog; |
| Accession No. | Uniprot:P41226 |
| Uniprot | P41226 |
| Formulation | Rabbit IgG in phosphate buffered saline , pH 7.4, 150mM NaCl, 0.02% sodium azide and 50% glycerol. |
| Storage | Store at +4°C short term. Store at -20°C long term. Avoid freeze / thaw cycle. |

Application Details

WB 1:500~1:2000 IHC 1:50~1:200 FC 1:50

Images



Western blot analysis of Ube1L / UBA7 in HepG2 cell lysate.

Product Description

Activates ubiquitin by first adenylating with ATP its C-terminal glycine residue and thereafter linking this residue to the side chain of a cysteine residue in E1, yielding an ubiquitin-E1 thioester and free AMP.

Background

Activates ubiquitin by first adenylating with ATP its C-terminal glycine residue and thereafter linking this residue to the side chain of a cysteine residue in E1, yielding an ubiquitin-E1 thioester and free AMP.

Note: This product is for in vitro research use only