

CD116 Rabbit mAb

Catalog No: #60279

Package Size: #60279-1 50ul #60279-2 100ul

Orders: order@signalwayantibody.comSupport: tech@signalwayantibody.com

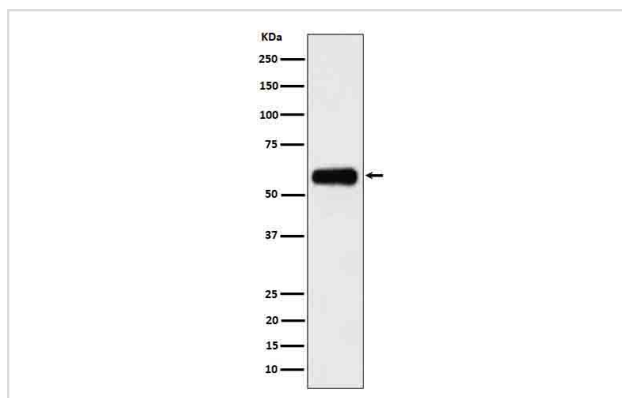
Description

Product Name	CD116 Rabbit mAb
Host Species	Rabbit
Clonality	Monoclonal
Isotype	Rabbit IgG
Purification	Affinity-chromatography
Applications	WB
Species Reactivity	Human
Specificity	CD116 Antibody detects endogenous levels of total CD116
Immunogen Description	A synthesized peptide derived from human CD116
Other Names	CD116; CDw116; CSF2R; CSF2RA; CSF2RAX; CSF2RAY; CSF2RX; CSF2RY; SMDP4;
Accession No.	Uniprot:P15509
Uniprot	P15509
Formulation	Rabbit IgG in phosphate buffered saline , pH 7.4, 150mM NaCl, 0.02% sodium azide and 50% glycerol.
Storage	Store at +4°C short term. Store at -20°C long term. Avoid freeze / thaw cycle.

Application Details

WB 1:500~1:2000

Images



Western blot analysis of CD116 in 293 cell lysate.

Product Description

Low affinity receptor for granulocyte-macrophage colony-stimulating factor. Transduces a signal that results in the proliferation, differentiation, and functional activation of hematopoietic cells.

Background

Low affinity receptor for granulocyte-macrophage colony-stimulating factor. Transduces a signal that results in the proliferation, differentiation, and functional activation of hematopoietic cells.

Note: This product is for in vitro research use only