

IL12B Rabbit mAb

Catalog No: #60280

Package Size: #60280-1 50ul #60280-2 100ul

Orders: order@signalwayantibody.com

Support: tech@signalwayantibody.com

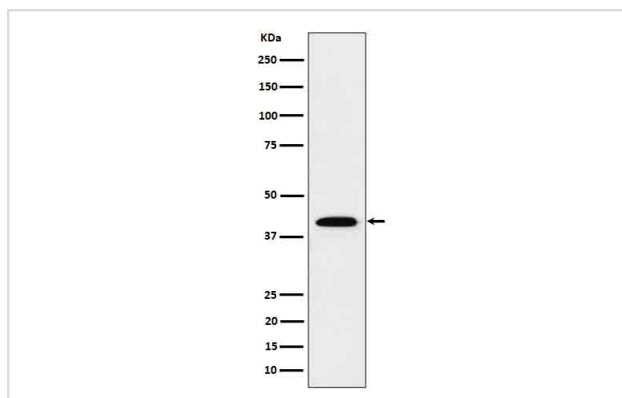
Description

Product Name	IL12B Rabbit mAb
Host Species	Rabbit
Clonality	Monoclonal
Isotype	Rabbit IgG
Purification	Affinity-chromatography
Applications	WB ICC/IF FC
Species Reactivity	Human
Specificity	IL12B Antibody detects endogenous levels of total IL12B
Immunogen Description	A synthesized peptide derived from human IL12B
Other Names	CLMF; CLMF p40; CLMF2; IL12 p40; IL12B; IMD28; IMD29; NKSF; NKSF2;
Accession No.	Uniprot:P29460
Uniprot	P29460
Formulation	Rabbit IgG in phosphate buffered saline , pH 7.4, 150mM NaCl, 0.02% sodium azide and 50% glycerol.
Storage	Store at +4°C short term. Store at -20°C long term. Avoid freeze / thaw cycle.

Application Details

WB 1:500~1:2000 ICC/IF 1:50~1:200 FC 1:50

Images



Western blot analysis of IL12B in Recombinant Human IL12B protein cell lysate.

Product Description

Cytokine that can act as a growth factor for activated T and NK cells, enhance the lytic activity of NK/lymphokine-activated killer cells, and stimulate the production of IFN-gamma by resting PBMC.

Background

Cytokine that can act as a growth factor for activated T and NK cells, enhance the lytic activity of NK/lymphokine-activated killer cells, and stimulate the production of IFN-gamma by resting PBMC.

Note: This product is for in vitro research use only