

## TIS11B Polyclonal Antibody

Catalog No: #48856

Package Size: #48856-1 50ul #48856-2 100ul

Orders: order@signalwayantibody.com

Support: tech@signalwayantibody.com

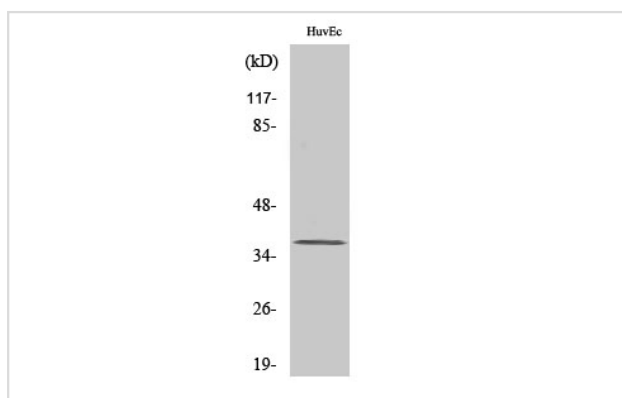
## Description

Product Name	TIS11B Polyclonal Antibody
Host Species	Rabbit
Clonality	Polyclonal
Isotype	IgG
Purification	The antibody was affinity-purified from rabbit antiserum by affinity-chromatography using epitope-specific immunogen.
Applications	WB;IHC;IF;ELISA
Species Reactivity	Human;Mouse;Rat
Specificity	TIS11B Polyclonal Antibody detects endogenous levels of TIS11B protein.
Immunogen Description	The antiserum was produced against synthesized peptide derived from human TISB.
Target Name	ZFP36L1
Other Names	ZFP36L1; BERG36; BRF1; ERF1; RNF162B; TIS11B; Zinc finger protein 36; C3H1 type-like 1; Butyrate response factor 1; EGF-response factor 1; ERF-1; Protein TIS11B
Uniprot	Q07352
GeneID	677
Calculated MW	36kD
Concentration	1 mg/ml
Formulation	Liquid in PBS containing 50% glycerol, 0.5% BSA and 0.02% sodium azide.
Storage	Store at -20°C/1 year

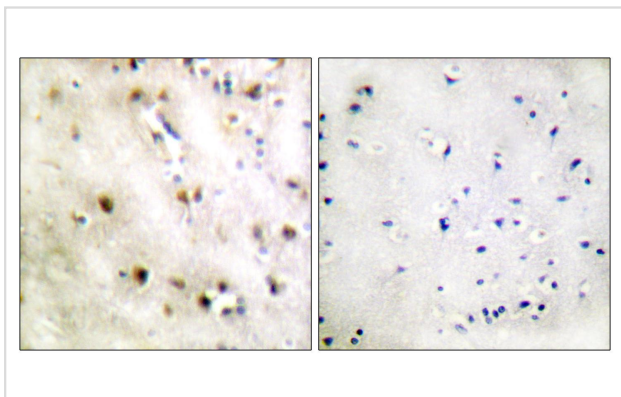
## Application Details

WB 1:500 - 1:2000. IHC 1:100 - 1:300. ELISA: 1:10000.. IF 1:50-200

## Images



Western Blot analysis of various cells using TIS11B Polyclonal Antibody.



Immunohistochemistry analysis of paraffin-embedded human brain tissue, using TISB Antibody. The picture on the right is blocked with the synthesized peptide.

---

Note: This product is for in vitro research use only