

## Rhodopsin Polyclonal Antibody

Catalog No: #48914

Package Size: #48914-1 50ul #48914-2 100ul

Orders: [order@signalwayantibody.com](mailto:order@signalwayantibody.com)Support: [tech@signalwayantibody.com](mailto:tech@signalwayantibody.com)

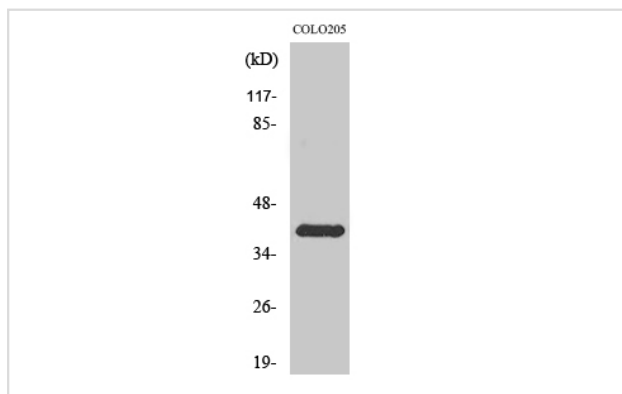
## Description

Product Name	Rhodopsin Polyclonal Antibody
Host Species	Rabbit
Clonality	Polyclonal
Isotype	IgG
Purification	The antibody was affinity-purified from rabbit antiserum by affinity-chromatography using epitope-specific immunogen.
Applications	WB;IHC;IF;ELISA
Species Reactivity	Human;Mouse;Rat
Specificity	Rhodopsin Polyclonal Antibody detects endogenous levels of Rhodopsin protein.
Immunogen Description	The antiserum was produced against synthesized peptide derived from human Rhodopsin.
Target Name	RHO
Other Names	RHO; OPN2; Rhodopsin; Opsin-2
Uniprot	P08100
GeneID	6010
Calculated MW	42kD
Concentration	1 mg/ml
Formulation	Liquid in PBS containing 50% glycerol, 0.5% BSA and 0.02% sodium azide.
Storage	Store at -20°C/1 year

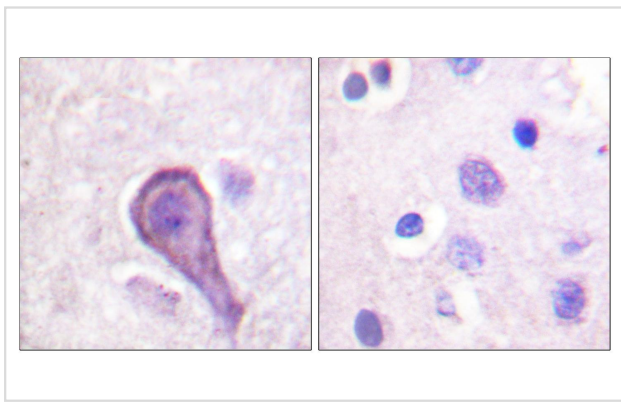
## Application Details

WB 1:500 - 1:2000. IHC 1:100 - 1:300. ELISA: 1:5000.. IF 1:50-200

## Images



Western Blot analysis of various cells using Rhodopsin Polyclonal Antibody



Immunohistochemistry analysis of paraffin-embedded human brain tissue, using Rhodopsin Antibody. The picture on the right is blocked with the synthesized peptide.

---

Note: This product is for in vitro research use only