

SPY1 rabbit pAb

Catalog No: #48887

Package Size: #48887-1 50ul #48887-2 100ul

Orders: order@signalwayantibody.comSupport: tech@signalwayantibody.com

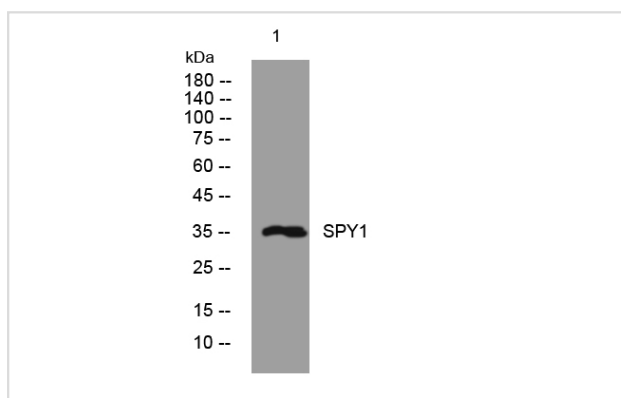
Description

Product Name	SPY1 rabbit pAb
Host Species	Rabbit
Clonality	Polyclonal
Isotype	IgG
Purification	The antibody was affinity-purified from rabbit antiserum by affinity-chromatography using epitope-specific immunogen.
Applications	WB;IF
Species Reactivity	Human;Mouse
Specificity	This antibody detects endogenous levels of SPY1 at Human/Mouse
Immunogen Description	Synthesized peptide derived from human SPY1
Target Name	SPRY1
Uniprot	O43609
GeneID	10252
Calculated MW	35kD
Concentration	1 mg/ml
Formulation	Liquid in PBS containing 50% glycerol, 0.5% BSA and 0.02% sodium azide.
Storage	Store at -20°C/1 year

Application Details

WB 1 μ O 500-2000, IP 1 μ O 50-100

Images



Western blot analysis of lysates from HEK293 cells, primary antibody was diluted at 1:1000, 4° over night

Note: This product is for in vitro research use only