

CIDEA Polyclonal Antibody

Catalog No: #48892

Package Size: #48892-1 50ul #48892-2 100ul

Orders: order@signalwayantibody.com

Support: tech@signalwayantibody.com

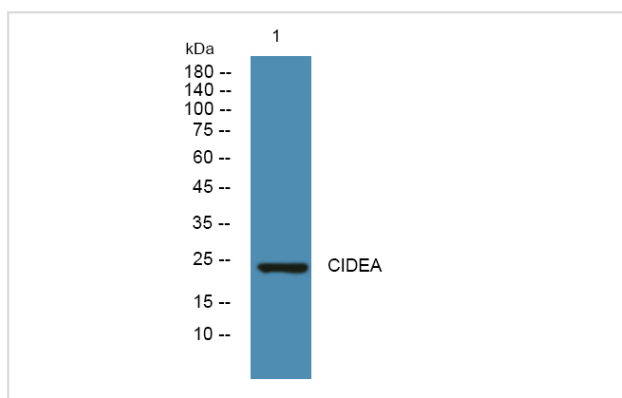
Description

Product Name	CIDEA Polyclonal Antibody
Host Species	Rabbit
Clonality	Polyclonal
Isotype	IgG
Purification	The antibody was affinity-purified from rabbit antiserum by affinity-chromatography using epitope-specific immunogen.
Applications	WB;ELISA
Species Reactivity	Human;Rat;Mouse
Specificity	CIDEA Polyclonal Antibody detects endogenous levels of protein.
Immunogen Description	Synthesized peptide derived from human protein
Target Name	CIDEA
Uniprot	O60543
GeneID	1149
Calculated MW	24kD
Concentration	1 mg/ml
Formulation	Liquid in PBS containing 50% glycerol, and 0.02% sodium azide.
Storage	Store at -20°C/1 year

Application Details

WB 1:500-2000 ELISA 1:5000-20000

Images



Western blot analysis of lysates from DU145 cells, primary antibody was diluted at 1:1000, 4° over night

Note: This product is for in vitro research use only