

## Arrestin-C Polyclonal Antibody

Catalog No: #48917

Package Size: #48917-1 50ul #48917-2 100ul

Orders: order@signalwayantibody.com

Support: tech@signalwayantibody.com

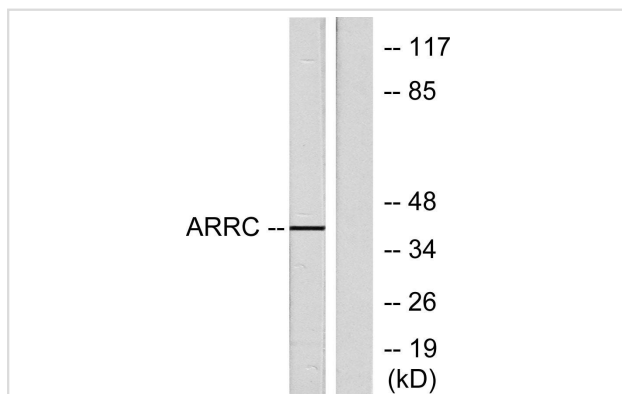
## Description

Product Name	Arrestin-C Polyclonal Antibody
Host Species	Rabbit
Clonality	Polyclonal
Isotype	IgG
Purification	The antibody was affinity-purified from rabbit antiserum by affinity-chromatography using epitope-specific immunogen.
Applications	WB;IHC;IF;ELISA
Species Reactivity	Human;Rat;Mouse
Specificity	Arrestin-C Polyclonal Antibody detects endogenous levels of Arrestin-C protein.
Immunogen Description	The antiserum was produced against synthesized peptide derived from human ARRC.
Target Name	ARR3
Other Names	ARR3; ARRX; CAR; Arrestin-C; Cone arrestin; C-arrestin; cArr; Retinal cone arrestin-3; X-arrestin
Uniprot	P36575
GeneID	407
Calculated MW	40kD
Concentration	1 mg/ml
Formulation	Liquid in PBS containing 50% glycerol, 0.5% BSA and 0.02% sodium azide.
Storage	Store at -20°C/1 year

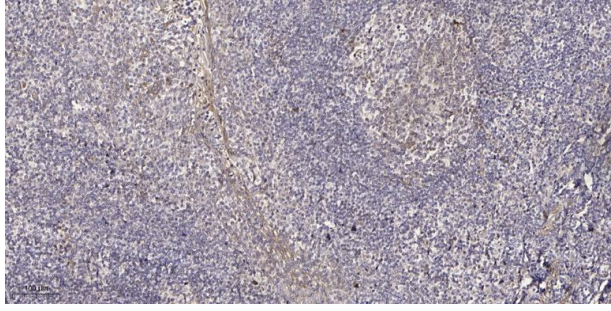
## Application Details

WB 1:500 - 1:2000. IHC 1:100 - 1:300. IF 1:200 - 1:1000. ELISA: 1:5000

## Images



Western blot analysis of lysates from LOVO cells, using ARRC Antibody. The lane on the right is blocked with the synthesized peptide.



Immunohistochemical analysis of paraffin-embedded human tonsil.

---

Note: This product is for in vitro research use only