

S2P Polyclonal Antibody

Catalog No: #48919

Package Size: #48919-1 50ul #48919-2 100ul

Orders: order@signalwayantibody.com

Support: tech@signalwayantibody.com

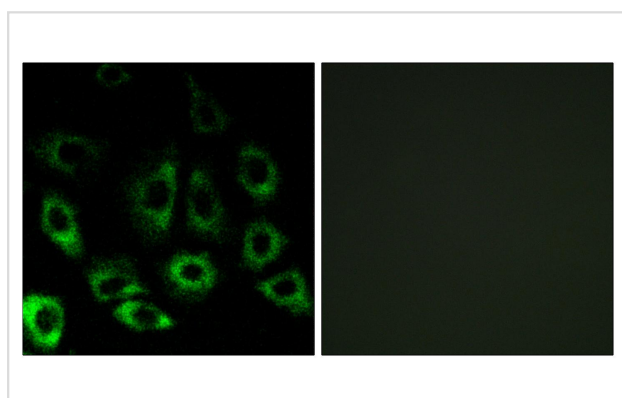
Description

Product Name	S2P Polyclonal Antibody
Host Species	Rabbit
Clonality	Polyclonal
Isotype	IgG
Applications	WB;IP;IF;ELISA
Species Reactivity	Human;Mouse;Rat
Specificity	S2P Polyclonal Antibody detects endogenous levels of S2P protein.
Immunogen Description	The antiserum was produced against synthesized peptide derived from human MBTPS2.
Target Name	MBTPS2
Other Names	MBTPS2; S2P; Membrane-bound transcription factor site-2 protease; Endopeptidase S2P; Sterol regulatory element-binding proteins intramembrane protease; SREBPs intramembrane protease
Uniprot	O43462
GeneID	51360
Calculated MW	57kD
Concentration	1 mg/ml
Formulation	Liquid in PBS containing 50% glycerol, 0.5% BSA and 0.02% sodium azide.
Storage	Store at -20°C/1 year

Application Details

WB 1:500-2000 IF 1:200 - 1:1000. ELISA: 1:20000

Images



Immunofluorescence analysis of A549 cells, using MBTPS2 Antibody. The picture on the right is blocked with the synthesized peptide.

Note: This product is for in vitro research use only