

## IRGM Polyclonal Antibody

Catalog No: #48941

Package Size: #48941-1 50ul #48941-2 100ul

Orders: [order@signalwayantibody.com](mailto:order@signalwayantibody.com)Support: [tech@signalwayantibody.com](mailto:tech@signalwayantibody.com)

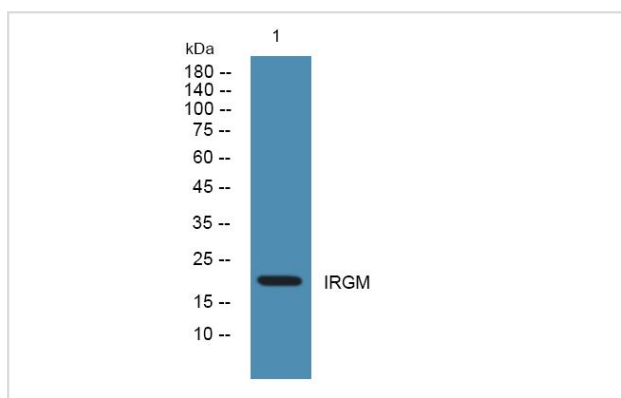
## Description

Product Name	IRGM Polyclonal Antibody
Host Species	Rabbit
Clonality	Polyclonal
Isotype	IgG
Purification	The antibody was affinity-purified from rabbit antiserum by affinity-chromatography using epitope-specific immunogen.
Applications	WB;ELISA
Species Reactivity	Human;Mouse;Rat
Specificity	IRGM Polyclonal Antibody detects endogenous levels of protein.
Immunogen Description	Synthesized peptide derived from human protein .
Target Name	IRGM IFI1 IRGM1 LRG47
Uniprot	A1A4Y4
GeneID	345611
Calculated MW	19kD
Concentration	1 mg/ml
Formulation	Liquid in PBS containing 50% glycerol, and 0.02% sodium azide.
Storage	Store at -20°C/1 year

## Application Details

WB 1:500-2000 ELISA 1:5000-20000

## Images



Western blot analysis of lysates from SH-SY5Y cells, primary antibody was diluted at 1:1000, 4° over night

Note: This product is for in vitro research use only