

CD158e Polyclonal Antibody

Catalog No: #48943

Package Size: #48943-1 50ul #48943-2 100ul

Orders: order@signalwayantibody.com

Support: tech@signalwayantibody.com

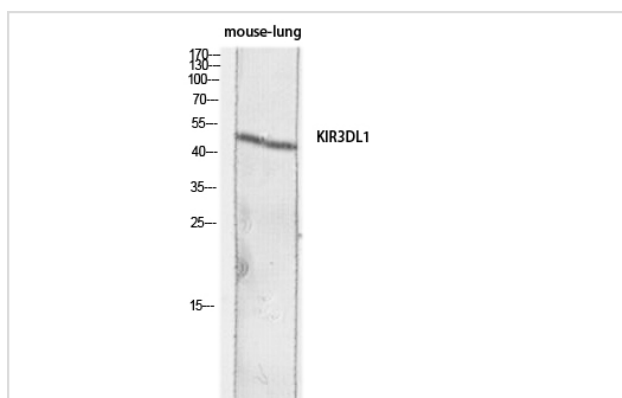
Description

Product Name	CD158e Polyclonal Antibody
Host Species	Rabbit
Clonality	Polyclonal
Isotype	IgG
Applications	WB;IHC;IF;ELISA
Species Reactivity	Human;Rat;Mouse
Specificity	CD158e Polyclonal Antibody detects endogenous levels of CD158e protein.
Immunogen Description	Synthesized peptide derived from Killer cell immunoglobulin-like receptor 3DL1
Target Name	KIR3DL1
Other Names	KIR3DL1; CD158E; NKAT3; NKB1; Killer cell immunoglobulin-like receptor 3DL1; CD158 antigen-like family member E; HLA-BW4-specific inhibitory NK cell receptor; MHC class I NK cell receptor; Natural killer-associated transcript 3; NKAT-3; p70 natural killer cell receptor clones CL-2/CL-11; p70 NK receptor CL-2/CL-11; CD158e
Uniprot	P43629
GeneID	3811
Calculated MW	50kD
Concentration	1 mg/ml
Formulation	Liquid in PBS containing 50% glycerol, 0.5% BSA and 0.02% sodium azide.
Storage	Store at -20°C/1 year

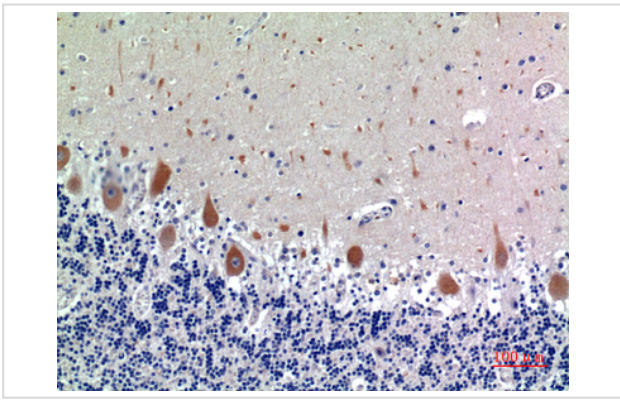
Application Details

WB 1:500 - 1:2000. IHC-p: 1:100-1:300. ELISA: 1:10000.. IF 1:50-200

Images



Western blot analysis of mouse-lung lysis using KIR3DL1 antibody.



Immunohistochemical analysis of paraffin-embedded human-brain, antibody was diluted at 1:100

Note: This product is for in vitro research use only