

## K1551 rabbit pAb

Catalog No: #48953

Package Size: #48953-1 50ul #48953-2 100ul

Orders: [order@signalwayantibody.com](mailto:order@signalwayantibody.com)Support: [tech@signalwayantibody.com](mailto:tech@signalwayantibody.com)

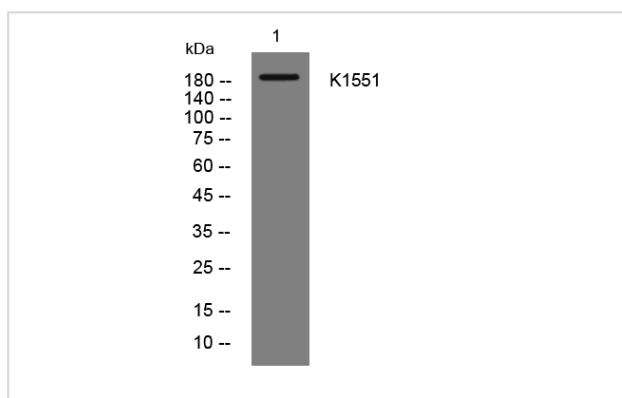
## Description

Product Name	K1551 rabbit pAb
Host Species	Rabbit
Clonality	Polyclonal
Isotype	IgG
Purification	The antibody was affinity-purified from rabbit antiserum by affinity-chromatography using epitope-specific immunogen.
Applications	WB;IHC
Species Reactivity	Human;Mouse
Specificity	This antibody detects endogenous levels of K1551 at Human/Mouse
Immunogen Description	Synthesized peptide derived from human K1551
Target Name	KIAA1551 C12orf35
Uniprot	Q9HCM1
GeneID	55196
Calculated MW	192kD
Concentration	1 mg/ml
Formulation	Liquid in PBS containing 50% glycerol, 0.5% BSA and 0.02% sodium azide.
Storage	Store at -20°C/1 year

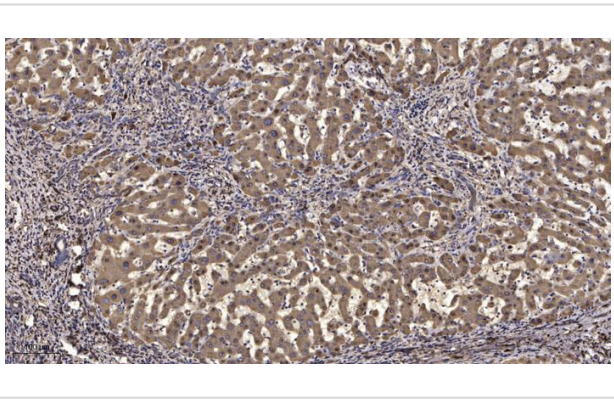
## Application Details

WB 1:500-2000;IHC-p 1:50-300

## Images



Western blot analysis of lysates from VEC cells, primary antibody was diluted at 1:1000, 4° over night



Immunohistochemical analysis of paraffin-embedded human liver cancer.

---

Note: This product is for in vitro research use only