

LECT2 Polyclonal Antibody

Catalog No: #49029

Package Size: #49029-1 50ul #49029-2 100ul

Orders: order@signalwayantibody.comSupport: tech@signalwayantibody.com

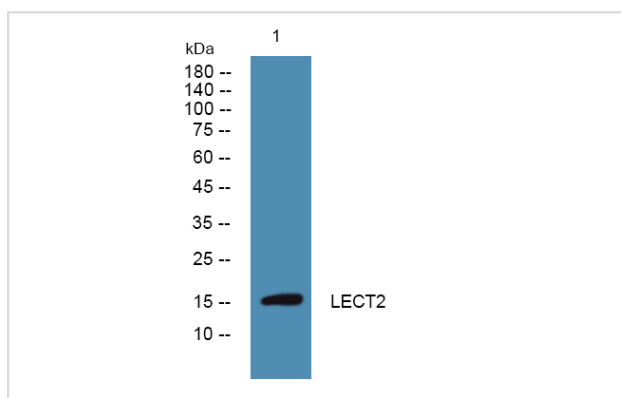
Description

Product Name	LECT2 Polyclonal Antibody
Host Species	Rabbit
Clonality	Polyclonal
Isotype	IgG
Purification	The antibody was affinity-purified from rabbit antiserum by affinity-chromatography using epitope-specific immunogen.
Applications	WB;ELISA
Species Reactivity	Human;Mouse
Specificity	LECT2 Polyclonal Antibody detects endogenous levels of protein.
Immunogen Description	Synthesized peptide derived from part region of human protein
Target Name	LECT2
Uniprot	O14960
GeneID	3950
Calculated MW	16kD
Concentration	1 mg/ml
Formulation	Liquid in PBS containing 50% glycerol, and 0.02% sodium azide.
Storage	Store at -20°C/1 year

Application Details

WB 1:500-2000 ELISA 1:5000-20000

Images



Western blot analysis of lysates from K562 cells, primary antibody was diluted at 1:1000, 4° over night

Note: This product is for in vitro research use only