

TTC22 rabbit pAb

Catalog No: #49031

Package Size: #49031-1 50ul #49031-2 100ul

Orders: order@signalwayantibody.comSupport: tech@signalwayantibody.com

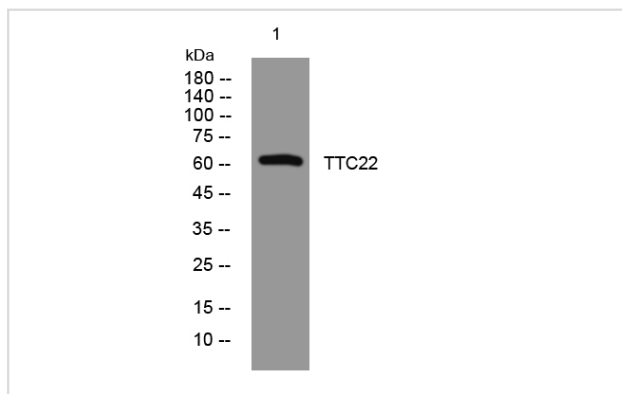
Description

| | |
|-----------------------|---|
| Product Name | TTC22 rabbit pAb |
| Host Species | Rabbit |
| Clonality | Polyclonal |
| Isotype | IgG |
| Purification | The antibody was affinity-purified from rabbit antiserum by affinity-chromatography using epitope-specific immunogen. |
| Applications | WB |
| Species Reactivity | Human;Mouse |
| Specificity | This antibody detects endogenous levels of TTC22 at Human/Mouse |
| Immunogen Description | Synthesized peptide derived from human TTC22 |
| Target Name | TTC22 |
| Other Names | Tetratricopeptide repeat protein 22 (TPR repeat protein 22) |
| Uniprot | Q5TAA0 |
| GeneID | 55001 |
| Calculated MW | 60kD |
| Concentration | 1 mg/ml |
| Formulation | Liquid in PBS containing 50% glycerol, 0.5% BSA and 0.02% sodium azide. |
| Storage | Store at -20°C/1 year |

Application Details

WB 1:500-2000

Images



Note: This product is for in vitro research use only