

## PRRSV-GP5 Rabbit pAb

Catalog No: #5292H

Package Size: #5292H-1 100ul

Orders: order@signalwayantibody.com

Support: tech@signalwayantibody.com

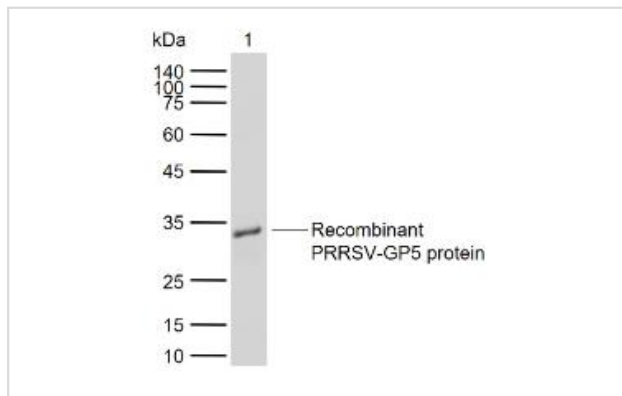
## Description

Product Name	PRRSV-GP5 Rabbit pAb
Isotype	IgG
Purification	affinity purified by Protein A
Applications	PRRSV
Species Reactivity	WB, ELISA
Immunogen Description	KLH conjugated synthetic peptide derived from PRRSV GP5: 101-200/200
Calculated MW	22kD
Concentration	1 mg/ml
Formulation	0.01M TBS (pH7.4) with 1% BSA, 0.02% Proclin300 and 50% Glycerol.
Storage	Shipped at 4°C. Store at -20°C for one year. Avoid repeated freeze/thaw cycles.

## Application Details

WB 1:500-2000 ELISA 1:5000-10000

## Images



Lane 1: Recombinant PRRSV-GP5 protein  
 Primary: Anti-PRRSV-GP5 at 1/1000 dilution  
 Secondary: IRDye800CW  
 Goat Anti-Rabbit IgG at 1/20000 dilution  
 Predicted band size: 22 kDa  
 Observed band size: 30 kDa

## Background

PRRSV is a small, enveloped RNA virus. It contains a single-stranded, positive-sense, RNA genome with a size of approximately 15 kilobases. The genome contains nine open reading frames. PRRSV is a member of the genus Arterivirus, family Arteriviridae, order Nidovirales. Subclinical infections are common, with clinical signs occurring sporadically in a herd. Clinical signs include reproductive failure in sows such as abortions and giving birth to stillborn or mummified fetuses, and cyanosis of the ear and vulva. In neonatal pigs, the disease causes respiratory distress, with increased susceptibility to respiratory infections such as Glasser's disease.

Note: This product is for in vitro research use only