

## ASCL1 Polyclonal Antibody

Catalog No: #49035

Package Size: #49035-1 50ul #49035-2 100ul

Orders: [order@signalwayantibody.com](mailto:order@signalwayantibody.com)Support: [tech@signalwayantibody.com](mailto:tech@signalwayantibody.com)

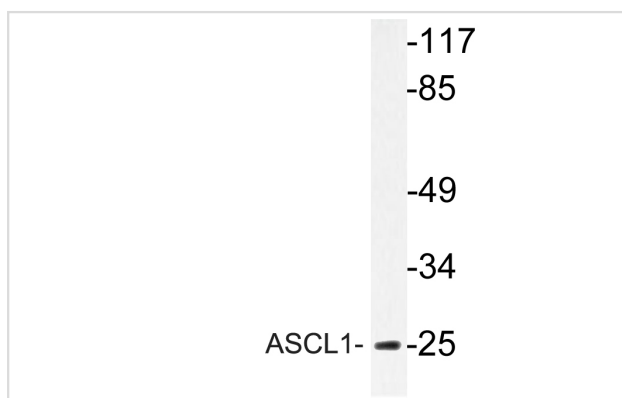
## Description

|                       |   |
|-----------------------|---|
| Product Name          | ASCL1 Polyclonal Antibody   |
| Host Species          | Rabbit  |
| Clonality             | Polyclonal  |
| Isotype               | IgG   |
| Purification          | The antibody was affinity-purified from rabbit antiserum by affinity-chromatography using epitope-specific immunogen. |
| Applications          | WB;IHC;IF;ELISA   |
| Species Reactivity    | Human;Mouse;Rat   |
| Specificity           | ASCL1 Polyclonal Antibody detects endogenous levels of ASCL1 protein.   |
| Immunogen Description | The antiserum was produced against synthesized peptide derived from human ASCL1.                                      |
| Target Name           | ASCL1   |
| Other Names           | ASCL1;ASH1;BHLHA46;HASH1;Achaete-scute homolog 1;ASH-1;hASH1;Class A basic helix-loop-helix protein 46;bHLHa46        |
| Uniprot               | P50553  |
| GeneID                | 429   |
| Calculated MW         | 25kD  |
| Concentration         | 1 mg/ml   |
| Formulation           | Liquid in PBS containing 50% glycerol, 0.5% BSA and 0.02% sodium azide.   |
| Storage               | Store at -20°C/1 year   |

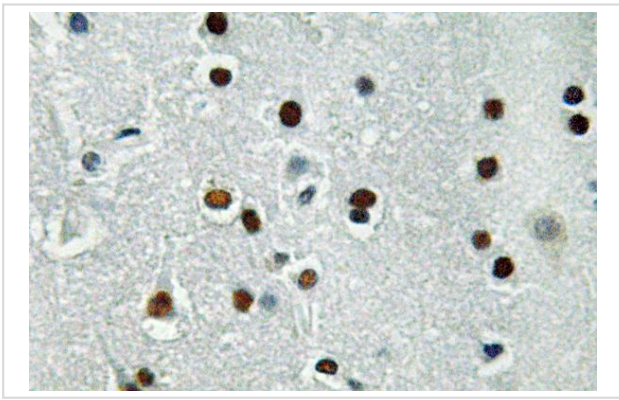
## Application Details

WB 1:500 - 1:2000. IHC 1:100 - 1:300. ELISA: 1:40000.. IF 1:50-200

## Images



Western blot analysis of lysate from Jurkat cells, using ASCL1 antibody.



Immunohistochemistry analysis of ASCL1 antibody in paraffin-embedded human brain tissue.

---

Note: This product is for in vitro research use only