

MIF Polyclonal Antibody

Catalog No: #49061

Package Size: #49061-1 50ul #49061-2 100ul

Orders: order@signalwayantibody.com

Support: tech@signalwayantibody.com

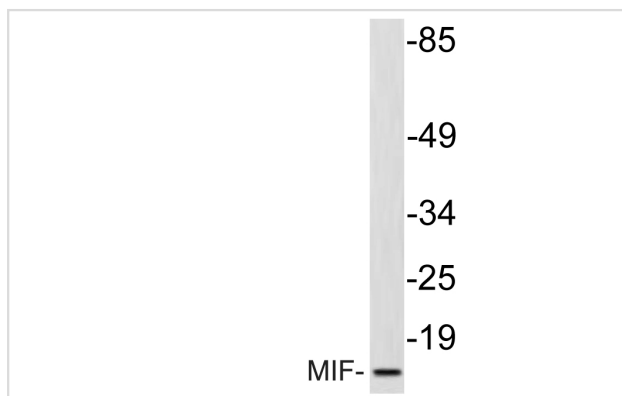
Description

Product Name	MIF Polyclonal Antibody
Host Species	Rabbit
Clonality	Polyclonal
Isotype	IgG
Purification	The antibody was affinity-purified from rabbit antiserum by affinity-chromatography using epitope-specific immunogen.
Applications	IF;WB;IHC;ELISA
Species Reactivity	Human;Mouse;Rat
Specificity	MIF Polyclonal Antibody detects endogenous levels of MIF protein.
Immunogen Description	The antiserum was produced against synthesized peptide derived from human MIF.
Target Name	MIF
Other Names	MIF;GLIF;MMIF;Macrophage migration inhibitory factor;MIF;Glycosylation-inhibiting factor;GIF;L-dopachrome isomerase;L-dopachrome tautomerase;Phenylpyruvate tautomerase
Uniprot	P14174
GeneID	4282
Calculated MW	12kD
Concentration	1 mg/ml
Formulation	Liquid in PBS containing 50% glycerol, 0.5% BSA and 0.02% sodium azide.
Storage	Store at -20°C/1 year

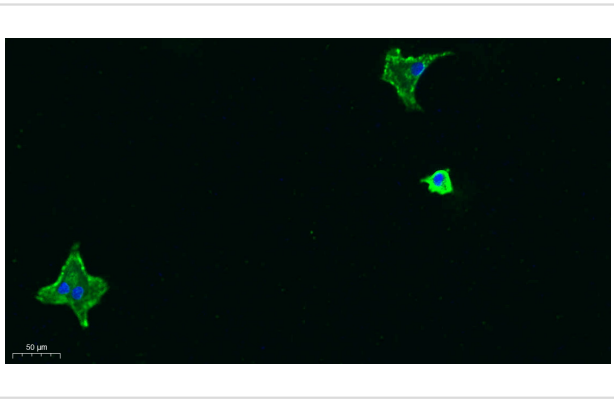
Application Details

IF 1:50-200 WB 1:500-2000, ELISA 1:10000-20000 IHC 1:50-300

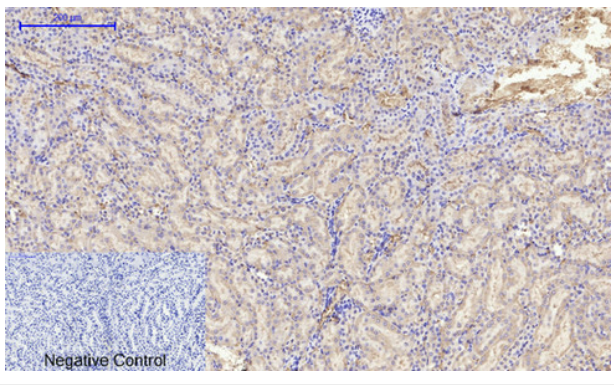
Images



Western blot analysis of lysate from HepG2 cells, using MIF antibody.



Immunofluorescence analysis of A549.



Immunohistochemical analysis of paraffin-embedded Mouse-kidney tissue.

Note: This product is for in vitro research use only