

AKAP 149 Polyclonal Antibody

Catalog No: #49187

Package Size: #49187-1 50ul #49187-2 100ul

Orders: order@signalwayantibody.comSupport: tech@signalwayantibody.com

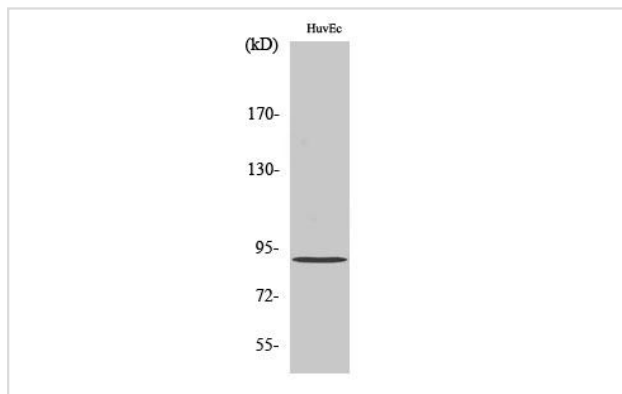
Description

Product Name	AKAP 149 Polyclonal Antibody
Host Species	Rabbit
Clonality	Polyclonal
Isotype	IgG
Purification	The antibody was affinity-purified from rabbit antiserum by affinity-chromatography using epitope-specific immunogen.
Applications	WB;IHC;IF;ELISA
Species Reactivity	Human;Rat;Mouse
Specificity	AKAP 149 Polyclonal Antibody detects endogenous levels of AKAP 149 protein.
Immunogen Description	The antiserum was produced against synthesized peptide derived from human AKAP1.
Target Name	AKAP1
Other Names	AKAP1;AKAP149;PRKA1;A-kinase anchor protein 1; mitochondrial;A-kinase anchor protein 149 kDa;AKAP 149;Dual specificity A-kinase-anchoring protein 1;D-AKAP-1;Protein kinase A-anchoring protein 1;PRKA1;Spermatid A-kinase anchor prot
Uniprot	Q92667
GeneID	8165
Calculated MW	90kD
Concentration	1 mg/ml
Formulation	Liquid in PBS containing 50% glycerol, 0.5% BSA and 0.02% sodium azide.
Storage	Store at -20°C/1 year

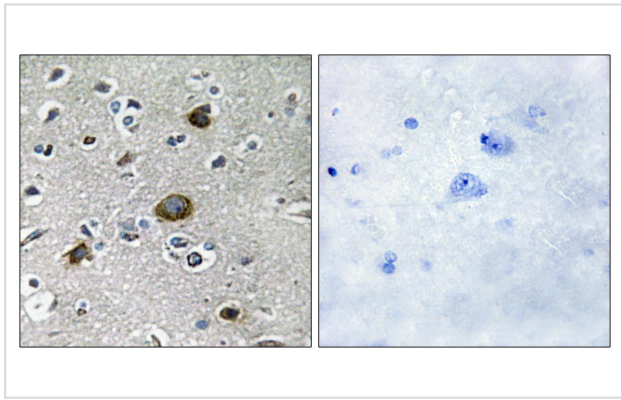
Application Details

WB 1:500 - 1:2000. IHC 1:100 - 1:300. IF 1:200 - 1:1000. ELISA: 1:5000

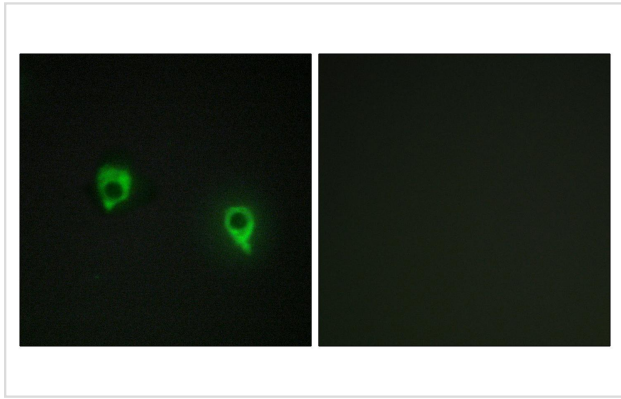
Images



Western Blot analysis of various cells using AKAP 149 Polyclonal Antibody diluted at 1:2000



Immunohistochemistry analysis of paraffin-embedded human brain tissue, using AKAP1 Antibody. The picture on the right is blocked with the synthesized peptide.



Immunofluorescence analysis of COS7 cells, using AKAP1 Antibody. The picture on the right is blocked with the synthesized peptide.

Note: This product is for in vitro research use only