

MaxiK α Polyclonal Antibody

Catalog No: #49226

Package Size: #49226-1 50ul #49226-2 100ul

Orders: order@signalwayantibody.comSupport: tech@signalwayantibody.com

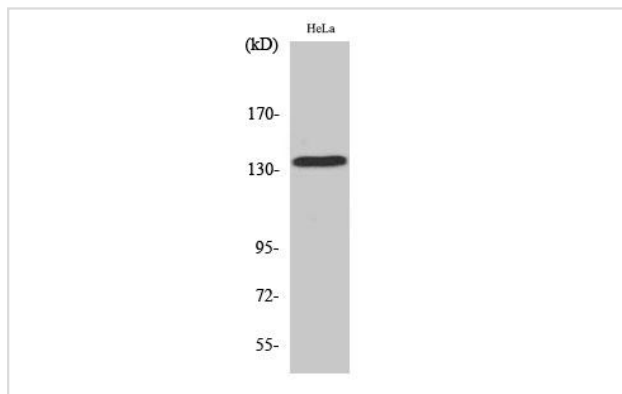
Description

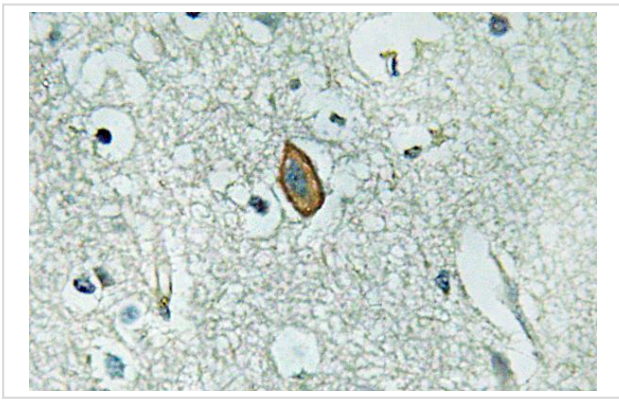
Product Name	MaxiK α Polyclonal Antibody
Host Species	Rabbit
Clonality	Polyclonal
Isotype	IgG
Purification	The antibody was affinity-purified from rabbit antiserum by affinity-chromatography using epitope-specific immunogen.
Applications	WB;IHC;IF;ELISA
Species Reactivity	Human;Mouse;Rat
Specificity	MaxiK α Polyclonal Antibody detects endogenous levels of MaxiK α protein.
Immunogen Description	The antiserum was produced against synthesized peptide derived from human MaxiK α .
Target Name	KCNMA1
Other Names	KCNMA1;KCNMA;SLO;Calcium-activated potassium channel subunit alpha-1;BK channel;BKCA alpha;Calcium-activated potassium channel; subfamily M subunit alpha-1;K(VCA)alpha;KCa1.1;Maxi K channel;MaxiK;Slo-alpha;Slo1;Slowpoke homolog
Uniprot	Q12791
GeneID	3778
Calculated MW	137kD
Concentration	1 mg/ml
Formulation	Liquid in PBS containing 50% glycerol, 0.5% BSA and 0.02% sodium azide.
Storage	Store at -20°C/1 year

Application Details

WB 1:500 - 1:2000. IHC 1:100 - 1:300. ELISA: 1:40000.. IF 1:50-200

Images

Western Blot analysis of various cells using MaxiK α Polyclonal Antibody



Immunohistochemistry analysis of MaxiK α antibody in paraffin-embedded human brain tissue.

Note: This product is for in vitro research use only