

Phospho-Phospho-PKR (T451) Antibody

Catalog No: #60285

Package Size: #60285-1 50ul #60285-2 100ul

Orders: order@signalwayantibody.comSupport: tech@signalwayantibody.com

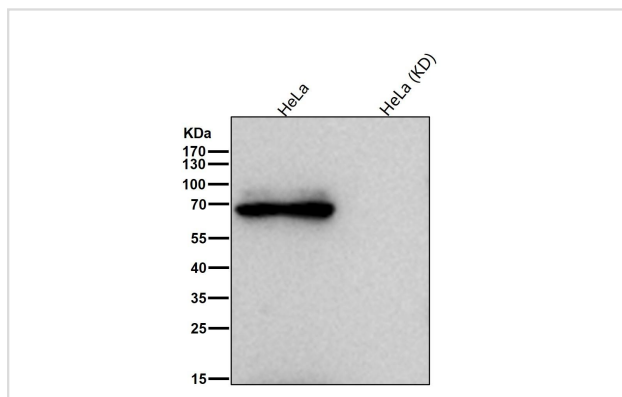
Description

Product Name	Phospho-Phospho-PKR (T451) Antibody
Host Species	Rabbit
Clonality	Monoclonal
Isotype	Rabbit IgG
Purification	Affinity-chromatography
Applications	WB
Species Reactivity	Human
Immunogen Description	A synthesized peptide derived from human Phospho-Phospho-PKR (T451)
Uniprot	P19525
Calculated MW	68kDa
Formulation	Rabbit IgG in phosphate buffered saline , pH 7.4, 150mM NaCl, 0.02% sodium azide and 50% glycerol.
Storage	Store at +4°C short term. Store at -20°C long term. Avoid freeze / thaw cycle.

Application Details

WB 1:500~1:2000

Images



All lanes use the Antibody at 1:1K dilution for 1 hour at room temperature.

Background

Following activation by double-stranded RNA in the presence of ATP, the kinase becomes autophosphorylated and can catalyze the phosphorylation of the translation initiation factor EIF2S1, which leads to an inhibition of the initiation of protein synthesis. Double-stranded RNA is generated during the course of a viral infection.

Note: This product is for in vitro research use only