

# Phospho-eIF4EBP1/2/3 (T46+T46+T32) Rabbit mAb

Catalog No: #60288

Package Size: #60288-1 50ul #60288-2 100ul

Orders: [order@signalwayantibody.com](mailto:order@signalwayantibody.com)

Support: [tech@signalwayantibody.com](mailto:tech@signalwayantibody.com)

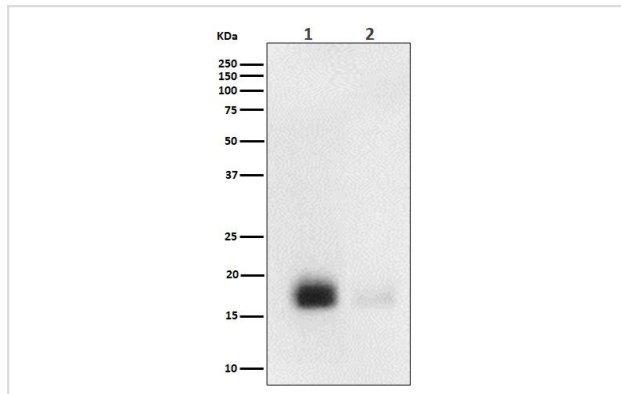
## Description

Product Name	Phospho-eIF4EBP1/2/3 (T46+T46+T32) Rabbit mAb
Host Species	Rabbit
Clonality	Monoclonal
Isotype	Rabbit IgG
Purification	Affinity-chromatography
Applications	WB,IHC
Species Reactivity	Human,Mouse
Uniprot	Q13541/Q13542/O60516,,
Calculated MW	13-19kDa
Formulation	Rabbit IgG in phosphate buffered saline , pH 7.4, 150mM NaCl, 0.02% sodium azide and 50% glycerol.
Storage	Store at +4°C short term. Store at -20°C long term. Avoid freeze / thaw cycle.

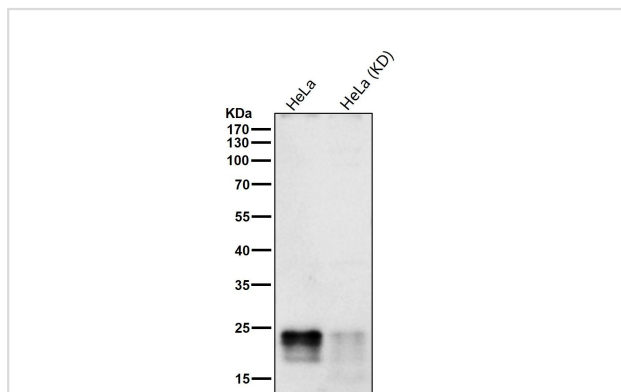
## Application Details

WB 1:500~1:2000 IHC 1:50~1:200

## Images



Western blot analysis of Phospho-eIF4EBP1/2/3 (T46+T46+T32) expression in 293 treated with FBS+293.



All lanes use the Antibody at 1:1K dilution for 1 hour at room temperature.

## Background

---

eIF4EBP1 is a member of a family of translation repressor proteins. The protein directly interacts with eukaryotic translation initiation factor 4E (eIF4E), which is a limiting component of the multisubunit complex that recruits 40S ribosomal subunits to the 5' end of mRNAs.

---

Note: This product is for in vitro research use only